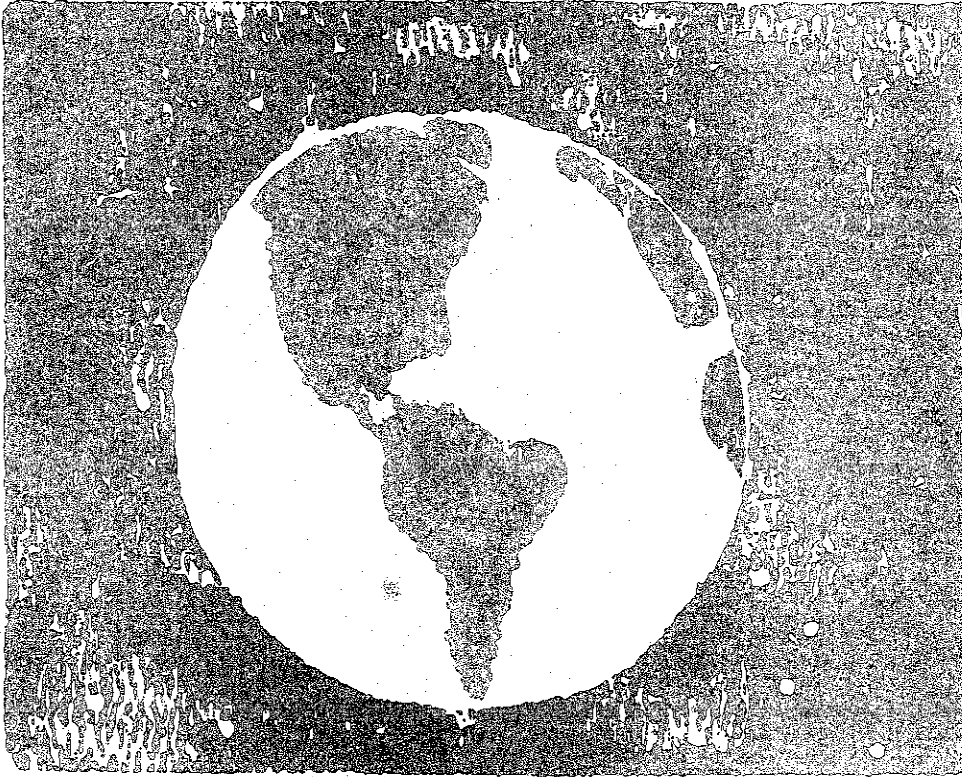


THE EARTH NEEDS YOUR VOTE



**1991
Legislative Voting Chart**

Environmental Guide to the Members of the State Legislature

California League of Conservation Voters



The Earth Needs Your Vote

The California League of Conservation Voters believes the single most important thing you can do to help protect the planet is to vote for pro-environment candidates. In 1992 California voters will elect:

- 52 members to the House of Representatives
- both U.S. Senators
- eighty state Assemblymembers
- over half our state Senators
- city council and county-wide lawmakers across the state

Remember, your vote counts! Only 41% of Californians who were eligible to vote actually voted in the last statewide election. Many of the pro-environment candidates CLCV has campaigned for have won by fewer than one vote per precinct. Future environmental victories depend on you!

An informed vote is a powerful vote. At CLCV, we want you to have the information it takes to make a voting decision you feel good about. The Legislative Voting Chart will help you decide who has earned your vote and who has not. For more information about registering to vote and where to vote on Election Day, please contact your county registrar of voters. Their numbers are listed on the next page.

The California League of Conservation Voters

The California League of Conservation Voters (CLCV) is the non-partisan campaign arm of the environmental community in California. The League works to protect the environmental quality of our state by electing candidates to office and passing environmentally sound ballot propositions

With 52 Congressional districts and 120 state legislative seats, California clearly presents a formidable challenge to any grassroots organization. To meet this challenge, CLCV conducts early research on candidates for office and concentrates on environmental races where our campaign resources can be expected to make the difference in the outcome of a race.

We back our political endorsements with campaign expertise, assisting candidates with the media, fundraising and grassroots organizing strategies they need to win their races. Each year we assign experienced campaign organizers (known as the Grizzly Corps) to the very closest environmental contests in the state. On Election Day we comb the precincts getting environmental voters to the polls for our candidates.

League canvassers communicate directly with hundreds of thousands of Californians every year. In addition to providing information on the environmental voting records of legislators, they register voters, recruit volunteers, generate letters to targeted representatives and identify "conservation voters".

Each year we publish our *Legislative Voting Chart* to help voters distinguish between the rhetoric and the reality of a legislator's environmental record. In recent years as more and more candidates have sought to appeal to California's "environmental vote", this information has become increasingly important. For more information about CLCV please contact us at one of our three offices:

10801 National Blvd.
Suite 550
Los Angeles, CA 90064
(310) 441-4162

965 Mission Street
Suite 750
San Francisco, CA 94103
(415) 896-5550

2015 J Street
Suite 32
Sacramento, CA 95814
(916) 448-8894

Acknowledgements: This chart was compiled by CLCV staff members Tracy Grubbs & Rachel Cooke with critical assistance from the following groups: Sierra Club, Planning & Conservation League, Defenders of Wildlife, Californians Against Waste, CalPIRG, V. John White & Associates & the Mountain Lion Foundation.

Table of Contents

How To Use This Chart	2
1991 Environmental Statistics	3
1991 Environmental Legislation	4
Assembly Floor Scorecards	11
Assembly Committee Scorecards	14
Senate Floor Scorecards	18
Senate Committee Scorecards	20
Index: Assembly Roster	23
Senate Roster	26



Registrar of Voters

The 1992 reapportionment plan has changed many of the state's political districts. As a result, many of the incumbent legislators from 1991 are running for different seats. Below is a full list of California County Registrar of Voters phone numbers to assist you in determining who your elected representatives are and where your local polling place is located. One local call is all it takes for you to be sure whose district you are in and where to cast your vote on Election Day!

Alameda	(510) 272-6933	Marin	(415) 499-6401	San Mateo	(415) 573-2081
Alpine	(916) 694-2281	Mariposa	(209) 966-2005	Santa Barbara	(805) 568-2200
Amador	(209) 223-6465	Mendocino	(707) 463-4371	Santa Clara	(408) 298-7400
Butte	(916) 538-7761	Merced	(209) 385-7541	Santa Cruz	(408) 425-2173
Calaveras	(209) 754-3411	Mondoc	(916) 233-3939	Shasta	(916) 225-5731
Colusa	(916) 458-5146	Mono	(619) 932-7911	Sierra	(916) 289-3295
Contra Costa	(510) 646-4166	Monterey	(408) 424-7621	Siskiyou	(916) 842-3531
Del Norte	(707) 464-7205	Napa	(707) 253-4321	Solano	(707) 429-6201
El Dorado	(916) 626-2266	Nevada	(916) 265-1298	Sonoma	(707) 527-2614
Fresno	(209) 488-3246	Orange	(714) 834-3262	Stanislaus	(209) 558-6313
Glenn	(916) 934-3364	Placer	(916) 823-4346	Sutter	(916) 741-7122
Humboldt	(707) 445-7678	Plumas	(916) 283-1060	Tehama	(916) 527-3353
Imperial	(619) 339-4226	Riverside	(714) 787-2921	Trinity	(916) 623-1220
Inyo	(619) 878-2411	Sacramento	(916) 366-2051	Tulare	(209) 733-6278
Kern	(805) 861-2625	San Benito	(408) 637-1057	Tuolumne	(209) 533-5570
Kings	(209) 582-3211	San Bernadino	(714) 387-8300	Ventura	(805) 654-2781
Lake	(707) 263-2372	San Diego	(619) 694-3400	Yolo	(916) 666-8133
Lassen	(916) 257-8311	San Francisco	(415) 554-4399	Yuba	(916) 741-6341
Los Angeles	(213) 721-1100	San Joaquin	(209) 468-2805		
Madera	(209) 675-7720	San Luis Obispo	(805) 549-5228		

The Legislative Process

The route a bill takes through the legislature is a little perplexing but follows a basic pattern. First, the bill is formally introduced by a member of the Legislature. It is given a number, has its first reading, and is assigned by the Rules Committee to an appropriate committee for review.

The Committee review process is critical. Most bills pass through one policy committee (such as Toxics) and one fiscal committee (such as Appropriations) in each house. It is in these committees that bills are either tabled for further study, passed, killed, or passed with amendments.

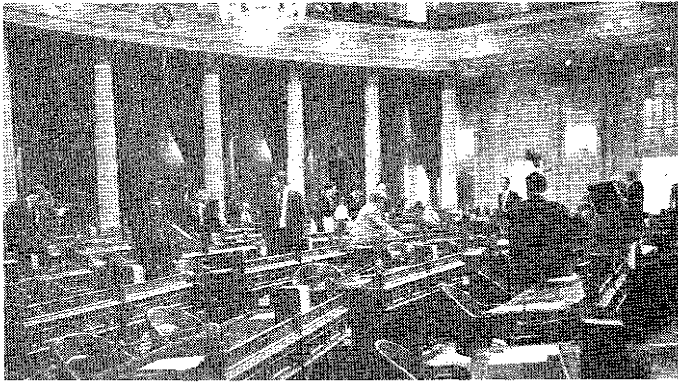
If passed by all the relevant committees, the bill is given a reading on the floor. On the floor a bill can either be passed, defeated, passed with amendments or returned to committee. If the author of the bill does not feel there are enough votes to pass the bill, he may decide to withdraw it or place it in the inactive file until there is more support. To pass, a bill needs an absolute majority vote; twenty-one votes in the Senate, and forty-one votes

in the Assembly. This means that legislators who are absent or choose not to vote are in effect voting "no".

Once a bill passes the house where it originated, it goes to the other house where it can be passed in identical form, defeated, or amended. If it is amended in a way that is not satisfactory to members of the first house, three members of each house form a conference committee to work out an acceptable compromise. If a compromise cannot be worked out, the bill dies.

When a bill passes through both houses, it goes to the governor who can either sign the bill, veto it, or ignore it. If after twelve days the governor hasn't acted on the bill, it becomes a law without his signature. If vetoed, a two-thirds vote in both houses can override the veto.

As 1991 was the first year of a two year session, certain bills were deferred for consideration until the second half of the session. Authors have the option of putting their bills on hold in which case they become two year bills.



Speak Out!

You have the power to express your approval or disapproval of your representative's performance by casting an environmental vote on Election Day. It is also important to remember that legislators rarely hear from their constituents. Because so few people take time to contact their representatives, one letter is often counted as representing the opinion of 500 other voters. During the legislative session (January through September) letters to representative can be sent to:

California State Assembly or State Senate
State Capitol
Sacramento, CA 95814
(916) 322-9900

District office phone numbers are listed in the Assembly and Senate Rosters beginning on page 23.

How To Use This Chart

The CLCV Legislative Voting Chart evaluates the 1991 California Legislature on a broad range of environmental issues. The chart lists the most important votes cast both in committee and on the floor on key bills relating to the environment. The votes tabulated in the chart are considered by the environmental community to be the most significant votes for each bill. They are not necessarily the final roll call votes for each bill.

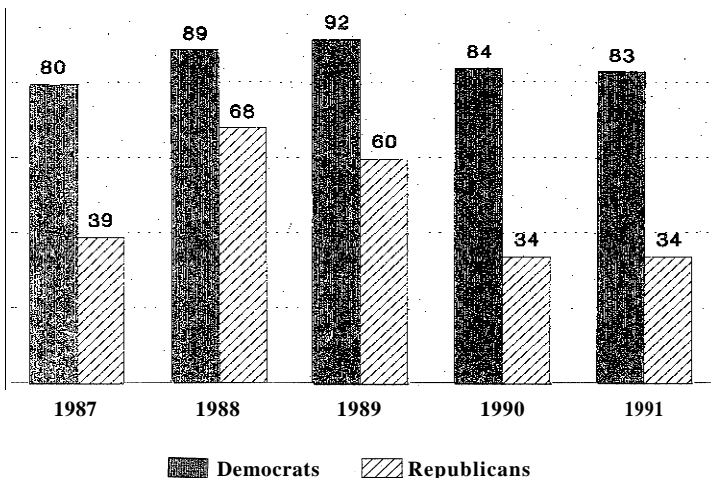
Pro-environment votes are designated with an "x" while anti-environment votes are denoted with an "o". Members who were absent or not voting at the time the vote was taken receive an "a" for that vote.

The scores to the right of each legislator's voting record represent the percentage of environmentally correct votes, excluding absences. Every legislator who voted on at least 60% of the key environmental legislation in 1991 is given a score. Members who voted on less than 60% of the bills listed receive an "a", for "absent". Legislators with five or more cumulative committee votes are given committee scores in addition to their floor scores. We encourage our members to check their legislators' attendance records and ask them for an explanation if they have missed an unreasonable number of votes.

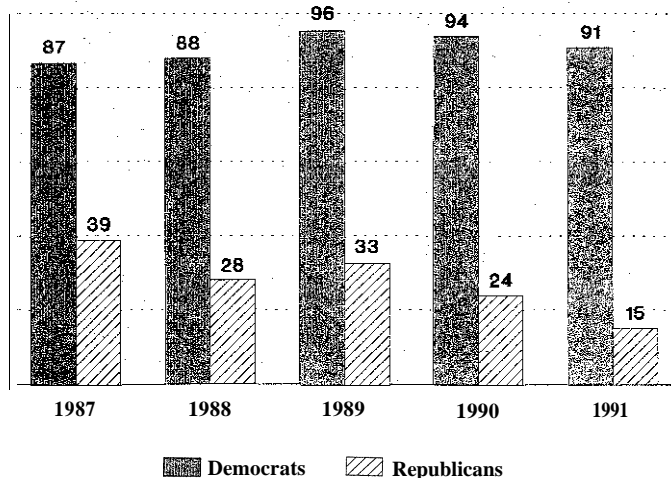
Every ten years the legislature responds to the census and redraws the legislative districts in California to reflect increases and decreases in population. The new district boundaries go into effect at the end of 1992. Consequently, it is especially important for our members to double-check their districts this year. For quick access we have listed the phone number of every County Registrar of Voters office on the **preceding** page.

1991 Environmental Scorecard Statistics

Senate Environmental Averages



Assembly Environmental Averages



Highest Scores



SENATE

Democrats

Hart (95)
Marks (95)
Roberti (91)
Petriss (91)
Rosenthal (91)

Republicans

Davis (75)
Bergeson (50)
Beverly (50)

ASSEMBLY

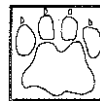
Democrats

Alpert, Bates, Becerra
Burton, B. Friedman,
T. Friedman, Gotch,
Hayden, Lempert, Lee,
Margolin, Roybal-Allard,
Sher, Speier (100)

Republicans

Filante (85)
Hunter (48)

Biggest Decline



SENATE

Democrats/Ind.

C. Green
(73 to 55)
Kopp (I)
(82 to 71)

Republicans

Hill
(42 to 25)
Beverly
(63 to 50)

ASSEMBLY

Democrats

Areias
(100 to 74)
Cannella
(93 to 70)

Republicans

Statham
(53 to 13)
Lancaster
(37 to 5)

Lowest Scores



SENATE

Democrats

C. Green (55)
Vuich (55)

Republicans

Rogers (5)
Royce (10)
Lewis (14)

ASSEMBLY

Democrats

Clute (62)
Cannella (70)
Eaves (71)

Republicans

Knowles (0)
Jones (0)
Chandler (0)
Wyman (0)

Most Improved



SENATE

Democrats

Dills
(50 to 73)
Presley
(65 to 80)

Republicans

Russell
(12 to 32)

ASSEMBLY

Democrats

Lempert
(95 to 100)

Republicans

Hunter
(28 to 48)
Felando
(35 to 42)

Freshmen Averages



SENATE

Democrats

Johnston (78)
Thompson (74)

Republicans

Lewis (14)
Leslie (19)
(average 16%)

ASSEMBLY

Democrats

Alpert (100)
Archie-Hudson (96)
Becerra (100)
Friedman, B. (100)
Gotch (100)
Lee (100)
Umberg (91)
(average 98%)

Republicans

Andal (9)
Boland (11)
Brulte (12)
Horcher (11)
Knowles (0)
Mays (30)
Seastrand (8)
(average 12%)



1991 Environmental Legislation

Below is a description of the most important environmental legislation from 1991. Each bill description includes a list of the most crucial committee and floor votes on the bill, the environmental community's position on the bill, and the final outcome of the legislation. If critical votes are not listed for a bill then all of the final committee and floor votes are included in the chart. Bills that were held over for 1992 are listed as two year bills.



= Pro- conservation bills that were signed into law.



= Pro-conservation bills that were vetoed & anti-conservation bills that were signed into law.

AIR POLLUTION

Major urban areas in California have the most persistent air quality problems in the nation. In spite of the landmark California Clean Air Act of 1988, Los Angeles still fails to meet health-based air standards roughly 200 days per year. At least 12 million people in Southern". California suffer from health problems which are the direct result of regular exposure- to dangerous levels of air pollution.

Air quality legislation in 1991 was mixed, and the legislature spent much time debating both good and bad bills. Fortunately, Governor Wilson signed three strong air quality bills, all of which former Governor Deukmejian had vetoed the year before. Unfortunately, new air quality legislation did not fare as well. The Assembly Ways and Means Committee killed an important bill, AB 264 by Lucille Roybal-Allard, which would have extended air districts' authority to halt illegal emissions immediately. One bill still alive in 1992 is SB 352 by Cecil Green. It attempts to take away some of the power given to air districts by the 1988 California Clean Air Act.

industries to provide valuable information about the hazardous materials they are using.

Supported by conservationists. Signed into law.

2 Air Permits



AB 158 (Roybal-Allard) enables air districts to deny or amend air pollution permits when an industry has a proven record of air quality violations.

Supported by conservationists. Signed into law.

3 Air Enforcement

AB 264 (Roybal-Allard) would have enabled regional air quality districts to halt the operation of local industries whose air pollution could endanger public health.

Supported by conservationists. Killed in Assembly Ways and Means.

4 New Agency



SB 124 (McCorquodale) establishes a San Joaquin Valley Air Quality Management District to oversee regional air pollution control efforts. The most critical votes on this bill took place in the Senate Committee on Local Government, the Senate Floor, the Assembly Committee on Natural Resources and the Assembly Floor.

Supported by conservationists. Signed into law.

1 Air Toxics



AB 157 (Roybal-Allard) gives local air quality districts a critical tool to curb toxic air pollution by requiring



Rachel Cooke

5 Indirect Sources

SB 352 (Green, C.) strips local air districts of the power to monitor real estate developments and other indirect (traffic-related) sources of air pollution.

Opposed by conservationists. Two year bill in Assembly Natural Resources.

6 Drive Plus

SB 431 (Hart) creates consumer incentives to fight air pollution. Under Hart's bill, buyers of dirtier, gas-guzzling cars would have to pay more sales tax and buyers of cleaner burning, more fuel efficient vehicles would receive tax rebates. This same legislation was vetoed by Deukmejian in 1990.

Supported by conservationists. Killed in Senate Revenue and Taxation Committee.

COASTAL PROTECTION


In recent years the slew of oil spills around the country, from the Alaskan Exxon Valdez disaster to the spill in California at Huntington Beach, has revealed the need for oil spill prevention; clean up and coastal protection. In 1990 the legislature passed the landmark Oil Spill Prevention and Response Act, to prepare for and guard against negligent oil transportation. In 1991 the legislature concentrated on strengthening the powers of the Coastal Commission and protecting the coast from further off-shore oil drilling.

In 1991 Governor Wilson signed into law a bill which gives the Coastal Commission the power to halt illegal construction along the coastline. The bill, SB 317, by retiring Senator Ed Davis, was the most significant piece of coastal protection legislation to be enacted in 1991. For the second year in a row the legislature passed a bill to authorize the Coastal Commission to develop an enforcement program. Unfortunately, Governor Wilson vetoed the bill.

A key bill to watch and support in 1992 is AB 854, the Coastal Sanctuary Act, which is still alive in the


legislature. The bill would ban untreated ocean discharges as well as all new oil and gas leases in state waters along the California coast.

7 Coastal Commission Enforcement

 SB 283 (Rosenthal) would have enabled the Coastal Commission to develop an enforcement program and to increase fines on developers who violate coastal protection laws.

Supported by conservationists Vetoed by the Governor.

8 Coastal Commission Authority

 SB 317 (Davis) grants cease and desist powers to the Coastal Commission, immediately forcing violators to halt projects that violate the Coastal Act.


Supported by conservationists. Signed into law.

9 Coastal Sanctuary Act

AB 854 (Lempert) establishes a coastal sanctuary off the California coast, banning all future offshore oil and gas leases in state waters, and mandating the secondary treatment of all municipal discharges into the ocean. The bill also grants cease and desist authority for the Coastal Commission and the State Lands Commission.

Supported by conservationists. Two year bill in Senate Government Organization.

10 Offshore Oil Leases


 AB 888 (Mays) prohibits the sale of future oil leases in state waters off the Santa Barbara, Los Angeles & Orange County coasts.

Supported by conservationists. Signed into law.

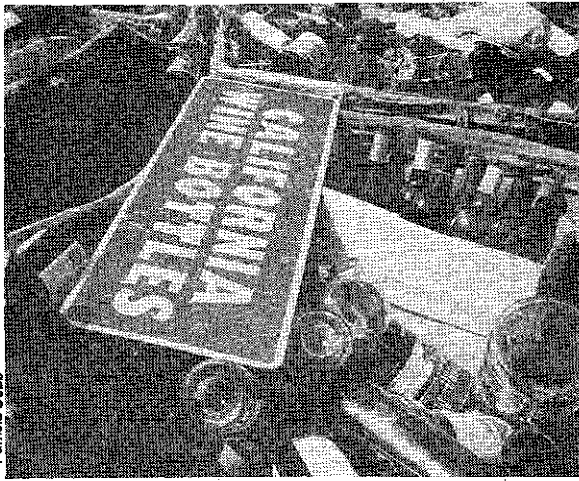
CORPORATE ACCOUNTABILITY

The legislature continues to introduce and pass bills which hold corporations and industries more accountable to environmental laws and standards. In one of his most surprising and disappointing vetoes, Governor Wilson rejected a bill, which would have given California courts an important new tool designed to prevent corporations from committing serious crimes. Under SB 260 by Gary Hart, state courts would have been able to place corporations on probation if they had been convicted of a serious violation of worker safety, environmental or financial law. Federal courts already possess this power.

11 Corporate Probation

 SB 260 (Hart) would have allowed courts to impose probation conditions on corporations which habitually violate environmental laws.

Supported by conservationists. Vetoed by the Governor.



Pamela Cobb

RECYCLING AND CONSERVATION

In 1989, the legislature passed the Integrated Waste Management Act (AB 939) which requires California cities and counties to reduce their waste by 50% by the year 2000. In 1990, environmentalists spent time working to clarify AB 939 and to ensure that the "environmentalist" position on the newly created Integrated Waste Management board was filled by someone with the proper credentials. Although AB 939 was supposed to herald a new environmental era of waste reduction and recycling, 1991 was an up and down year for recycling legislation.

The good news is the governor signed bills to increase plastic container recycling and to create the nation's first used motor oil recycling program. The bad news is the packaging and bottling industry continued to crush recycling legislation particularly in the Assembly Ways and Means Committee. Two of the most important bills of 1991, AB 750 and AB 1423, were defeated in this committee, but retained for the 1992 legislative session.

12 Expanded Bottle Recycling

AB 750 (Margolin) expands the state beverage container recycling program to include wine and non-carbonated water bottles, which are not currently redeemable for deposit.

Supported by conservationists. Two year bill in Assembly Ways and Means.

13 Recycled Content

AB 1423 (Gotch) establishes strict recycled content requirements for bottles and cans.

Supported by conservationists. Two year bill in Assembly Ways and Means.

ENERGY

In tandem with the need for better mass transit systems is the need to increase the fuel efficiency of our automobile and truck fleets. In the wake of the Gulf War, the legislature passed two bills by Senator Lucy Killea which focus on weaning the state from its dependence on oil. While the governor signed Killea's bill to promote fuel efficiency, he chose to veto her bill requiring state-owned vehicles to be low emission or alternative fuel vehicles by 1995. The latter was an attempt to create a firm market for alternative fuel vehicles, thereby increasing the likelihood of their availability to the public.

14 Global Warming

AB 920 (Hayden) requires the State Energy Commission to reduce carbon dioxide emissions by 20% by the year 2001. This bill is a slimmed down version of the greenhouse gas reduction portion of 1990's "Big Green" initiative.

Supported by conservationists. Two year bill in Senate Appropriations.

15 Alternative Fuels



SB 1212 (Killea) would have required all state-owned vehicles to be low emission or alternative fuel vehicles by 1995.

Supported by conservationists. Vetoed by the Governor.

16 Oil Use Reduction

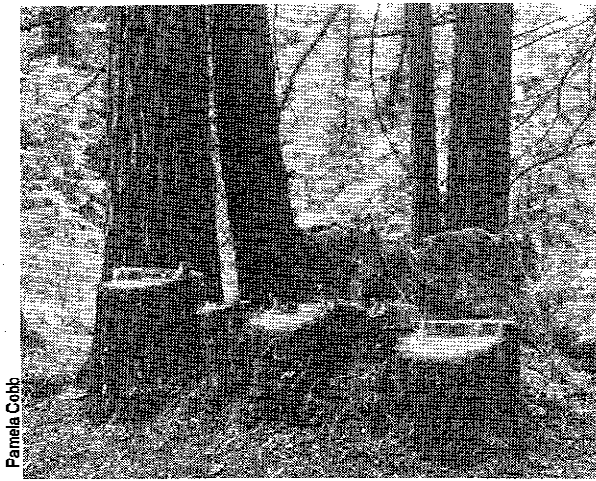


SB 1214 (Killea) promotes fuel efficiency and cuts petroleum use, by calling on the state to develop a transportation fuel plan based on the least environmental and economic cost.

Supported by conservationists. Signed into law.

FORESTS

California's old growth redwoods have been reduced to less than 5% of their original acreage. For several years, Assemblymember Byron Sher has attempted to enact strong legislation to reform logging practices as well as protect jobs in California. The 1991 legislative session was particularly complex regarding forest protection. A package of four bills offering substantial reform of forest practices moved through the legislature, and was ultimately combined into one bill, AB 860, known as the Sierra Accord. As it turned out, the Sierra Accord (which was supported by environmentalists, woodworkers and timber companies) was significantly weakened during the final hours of the legislature by amendments added by the



Pamela Cobb

Wilson Administration. Although the amended Accord reached his desk, the governor vetoed the measure. The governor then unveiled his own timber compromise, known as the Grand Accord, which received mixed reviews from the environmental community. The legislature has since rejected the Grand Accord.

This year's Voting Chart tallies the Committee votes on the four bills that composed the Sierra Accord package and the floor votes on Byron Sher's AB 860, which served as the final vehicle for the package.

17 Tree Planting

AB 54 (Friedman) would have protected California's native oak trees which are being decimated by development. The bill's planting and protection program would have been funded by penalty fees.

Supported by conservationists. Killed on Senate Floor.

18 Timber Reform



AB 860 (Sher) was the final vehicle for the Sierra Accord an historic compromise between members of the timber industry and the environmental community. AB 860 started out as a package of four bills, whose critical committee votes are listed below. Although AB 860 was weaker in some respects than the four bills preceeding it, it would have set limits on clearcutting, protected old growth forests and established sustained yield regulations for the harvesting of trees on private land.

Supported by conservationists. Vetoed by the Governor.

AB 641 (Hauser) would have limited clearcutting to no more than 15% every ten years. **Amended into AB 860.**

AB 714 (Sher) would have prohibited clearcutting for all ancient forests. This bill would have reduced the maximum size of clearcuts from 120 to 20 acres, and required buffer zones between clearcuts to be

as large as the clearcuts themselves. **Amended into AB 860.**

SB 300 (McCorquodale) would have reorganized the Board of Forestry to include representatives from conservation groups as well as industry. **Amended into AB 860.**

SB 854 (Keene) would have required long-term Timber Management Plans for all land holdings exceeding 2500 acres. **Amended into AB 860.**

The most important votes on AB 641, AB 714, SB 300 and SB 854 took place in the Assembly Natural Resources and Ways & Means Committees and in the Senate Natural Resources and Appropriations Committees.

PESTICIDES

A report prepared in April 1991 by the California Senate Office of Research casts serious doubt on the ability of current pesticide regulations to protect public health. Every year millions of Californians are exposed to pesticides as a result of residues on food, contaminants in the air, deposits in house dust and pollutants in water. Despite the increase in legislation to regulate the use and manufacture of pesticides, information regarding the potential hazards of hundreds of pesticides remains largely unknown. The public receives no warnings about dozens of pesticides identified as posing a threat of cancer, birth defects or other long-term health threats.

In 1991 Senator Nicholas Petris authored three important bills which aim for comprehensive pesticide regulation. Two of the bills seek protection for farmworkers and school children. The third sets deadlines for the completion of research on the health effects of certain pesticides.

19 Farmworkers

SB 520 (Petris) offers new and strengthened protection for farmworkers from toxic pesticides. The bill prohibits spraying of 27 well-known, extremely toxic pesticides, including parathion, unless alternatives are unavailable.

Supported by conservationists. Two year bill in Assembly Labor.

20 Data Gaps



SB 550 (Petris) establishes deadlines for filling in the pesticide "data gaps" which persist despite the existence of laws (such as the 1984 Birth Defect

Prevention Act) requiring data on the health effects of all pesticides used in California.

Supported by conservationists. Signed into law.

21 School Children

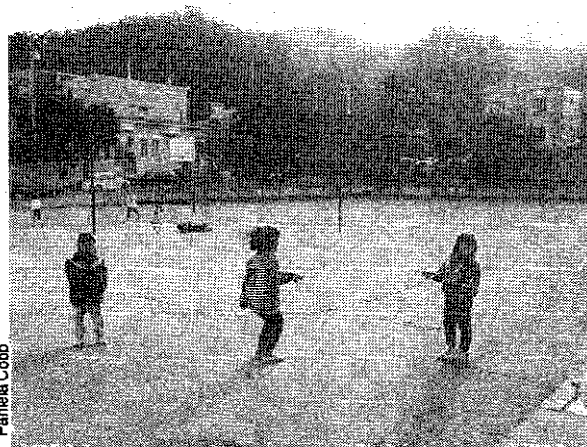
SB 926 (Petrus), prohibits the use of cancer causing pesticides in schools and day care centers.

Supported by conservationists. Two year bill in Assembly Ways & Means.

22 Weak Cal-EPA

AB 1325 (Jones) raises taxes on pesticides so that the Department of Agriculture would have a fund of up to a million dollars to "comment" on the pesticide decisions of the new Cal-EPA. The most critical votes on this bill took place on the Senate Floor and in Assembly Concurrence.

Opposed by conservationists. Two year bill in Assembly Concurrence.



tion 65, the Toxics Initiative, in 1986. The sheer number of bills shows a growing concern about toxic pollution and public health. The most critical bills on toxics regulation in 1991 were AB 1519, by Barbara Lee, the "Toxics Truth Act", and AB 2038, by Lloyd Connelly, which will test children for lead poisoning.

23 Rail Accidents

SB 48 (Thompson) establishes various regulatory and training programs designed for better prevention and response to chemical spills from rail cars.

Supported by conservationists. Signed into law.

24 Toxics Truth Act

AB 1519 (Lee) requires companies to report the amount of toxics they use and generate. Makes information available to consumers and workers who want to know what kind of toxics they are being exposed to.

Supported by conservationists. Two year bill on the Senate Floor.

25 Environmental Equity

AB 937 (Roybal-Allard) would have forced state officials to address the large concentration of environmental hazards in minority communities by requiring officials to consider a community's demographic make-up before siting a local hazardous waste facility.

Supported by conservationists. Vetoed by the Governor.

26 Toxics Transportation

AB 715 (Wright) significantly weakens laws requiring the inspection of hazardous waste transported by trucks in "roll-off" bins. The most critical votes on this bill took place in the Assembly committees, on the Assembly Floor and in the Senate Appropriations committee, after which the bill was amended and environmentalists withdrew their opposition.

Opposed by conservationists. Opposition withdrawn in Senate after bill was amended. Signed into law.

27 Lead Testing

AB 2038 (Connelly) requires the state to test children in certain "at risk" communities for lead poisoning. The bill aims to reduce the number of children with lead-induced learning disabilities by reducing exposure and treating poisoning.

Supported by conservationists. Signed into law,

28 Coastal Pollution

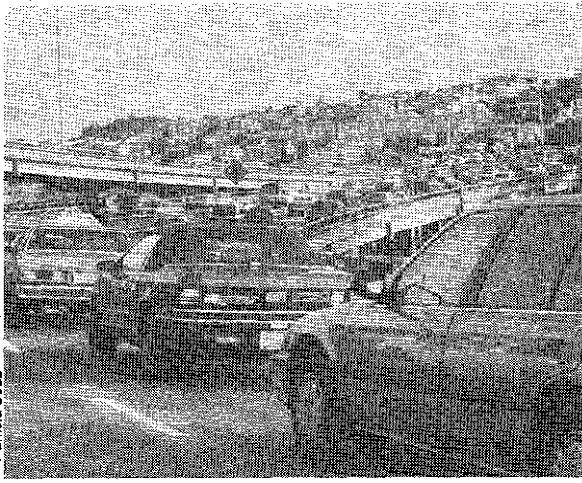
AB 614 (Hayden) requires regional water boards to establish maximum waste loads for facilities discharging toxic pollutants into coastal waters.

Supported by conservationists. Two year bill on the Senate Floor.

TOXICS AND HAZARDOUS WASTE

In 1991 California suffered its worst ever toxic chemical disasters: the Southern Pacific pesticide spills in Ventura and on the Sacramento river. The river spill killed 20 miles of river habitat before flowing into the reservoir at Lake Shasta. Until the spills, rail safety was a topic to which very few in the legislature or the administration had paid attention. After the spills this changed, and a task force worked hard to draft comprehensive legislation to address the problem. The most important bill to result was the Rail Accident Prevention and Response Act, SB 48, by Mike Thompson, modeled on 1990's successful Oil Spill Prevention and Response Act. The governor signed the act into law.

Perhaps in part because of the spills, 1991 was also a good year for toxics and hazardous waste legislation. This marks a welcome change from the relative lack of toxics legislation since the passage of Proposi-



Pamela Cobb

TRANSPORTATION

California has the highest number of automobiles per capita in the U.S. The resulting tangle of traffic on our freeways has generated a public support for mass transit. In June 1990 voters approved three initiatives to repair and expand California's rail transit system.

1991, by contrast, was a dismal year for transportation legislation. In a major disappointment, the legislature passed but Governor Wilson vetoed AB 271 by Jackie Speier, which would have changed the way counties receive transportation funding. The funding law is currently based on county population and highway miles, but AB 271 would have added rail miles to the equation so that counties favoring railroad construction could receive additional finding. Still on the horizon for 1992 is AB 2109, by Richard Katz, to establish financial or other incentives to encourage employees to carpool to work.

29 Commuter Incentives

AB 2109 (Katz) establishes economic incentives to encourage commuters to carpool or use mass transit. **Supported by conservationists. Two year bill in Senate Transportation.**

30 Rail Funding

AB 271 (Speier) would have eliminated the bias against rail funding by adjusting state transportation funding formulas to reflect rail as well as highway miles. **Supported by conservationists. Vetoed by the Governor,**

WATER PARKS

At the beginning of this legislative session, most observers of California water policy expected the fifth year of drought to, bring a flood of legislative water policy proposals. Senator David Roberti announced his intent to oversee the formation of a major water policy proposal. However, he decided to wait until the second year of the session due to the issue's complexity and the amount of time taken up by the budget crisis and reapportionment. There was a lot of activity in the area of water policy, but little was actually accomplished. The legislature enacted SB 229, by Dan Boatwright, a water-saving measure which requires the installation of water meters on all new residential and commercial properties.

An important follow-up bill for 1992 is SB 1224 by Lucy Killea, which would require the installation of Ultra Low Flush toilets every time residential or commercial property is transferred.

31 Groundwater

SB 959 (Presley) imposes a small fee on urban water users to clean up groundwater pollution and to restore water-related fish and wildlife resources. The "pollution fund" would pay for grants to urban districts unable to meet safe drinking water standards.

Supported by conservationists, Two year bill in Assembly Water, Parks and Wildlife.

32 Water Meters



SB 229 (Boatwright) requires the installation of water service meters on all new residential and commercial properties. Studies have shown this creates a savings of 20% to 40%. The most important votes on this bill took place in Senate Agriculture & Water Resources, on the Senate Floor, in Assembly Water, Parks & Wildlife and on the Assembly Floor.

Supported by conservationists. Signed into law.

33 Low-flow Toilets

SB 1224 (Killea) requires the installation of ultra low flush (ULF) toilets whenever property is transferred. ULF toilets use only 1.5 gallons per flush. Their use could save upwards of 700,000 acre feet per year, equivalent to the amount of water used annually by 700,000 families of five.

Supported by conservationists, Two year bill on the Senate floor.

34 Stream Protection



AB 1386 (Cortese) increases penalties for stream bed violations up to \$25,000 per day. These requirements are designed to protect fish and wildlife



Particularly damaging is SB 424, by Senator Quentin Kopp, which limits the ability of grassroots environmental groups to form the coalitions necessary to place initiatives which fund specific environmental programs on the ballot. The bill unfairly targets non-profit groups by preventing them forming coalitions to develop and fund public interest initiatives which involve expenditure plans. But the bill will not prevent a single, well-financed industry from devising its own initiative with an expenditure plan that directly benefits that industry. SB 424 was signed into law.

35 Auburn Dam

SB 39 (Ayala) proposes for the ballot a \$1.2 billion general obligation bond measure to begin construction of Auburn Dam, a very costly and destructive water project, which would drown 48 miles of the scenic American river.

Opposed by conservationists. Two year bill on the Senate floor.

36 Public Works

AB 324 (Areias) puts all state lands, including parks and wildlife habitat, under the Public Works Board, taking authority away from resource protection experts and giving it to bureaucrats.

The most critical votes on this bill took place in Ways & Means and on the Assembly Floor.

Opposed by conservationists. Two year bill in Senate Government Organization.

37 Park Bond Measures

SCA 18 (Hill) allows city and county park bond measures to pass by a majority vote, rather than a two-thirds vote. Could significantly increase the amount of local park land acquisitions in California.

Supported by conservationists. Two year bill in Senate Constitutional Amendments.

38 Revenue Limits

SCA 9 (Roberti) severely restricts the right of citizens to put significant environmental initiatives on the ballot by requiring initiatives which cost the state more than \$7 million to provide a new source of revenue to cover these costs.

Opposed by conservationists. Two year bill on the Assembly Floor.

39 Coalitions



SB 424 (Kopp) restricts opportunities for grassroots environmental groups to form coalitions to get initiatives on the ballot.

Opposed by conservationists. Signed into law.



INITIATIVE PROCESS

In recent years the environmental community has made much use of the initiative process. 1991 saw the introduction of two bills which would severely restrict the rights of citizens' groups to put significant environmental initiatives on the ballot. Had these measures been in effect at the time, they would have prohibited successful environmental ballot initiatives like the Parks and Wildlife Bond Act of 1988 and the Rail Transit Bond Act of 1990.

Assembly Floor	1. Air Toxics	2. Air Permits	4. New Agency	7. Increase Fines	8. Enforcement	9. Sanctuary	10. Offshore Oil	11. Corp. Probation	14. Global Warming	15. Alternative Fuels	16. Oil Use Reduction	17. Tree Planting	18. Timber Reform	20. Data Gaps	22. Weak Cal-EPA	23. Rail Accidents	24. Information	25. Envrnmntl. Equity	26. Toxics Transp.	27. Lead Testing	28. Coastal Pollution	29. Commuter Incen.	30. Rail Funding	32. Water Meters	34. Stream Protection	36. Public Works	39. Coalitions	Floor Score	Committee Score
Allen (R-71)	o	o	a	o	o	o	a	o	o	o	o	o	o	o	a	o	o	o	o	o	x	o	x	o	a	o	o	9	35
Alpert (D-75)	x	x	x	x	x	x	x	x	x	x	x	x	x	x	x	x	x	x	x	x	a	x	x	x	x	a	x	100	100
Andal (R-26)	a	*	o	o	o	o	*	o	o	o	o	o	o	o	x	o	*	o	o	o	x	a	o	o	o	o	o	9	-
Archie-H.(D-48)	x	x	x	x	x	x	x	x	x	x	x	x	x	x	a	x	x	x	x	x	x	x	x	x	x	a	o	96	-
Areias (D-25)	a	x	a	x	x	x	x	o	o	x	x	x	x	x	o	x	x	x	o	x	x	x	a	a	x	o	o	74	-
Baker (R-15)	o	o	o	o	o	o	o	o	o	o	o	o	o	o	x	o	o	o	o	o	x	o	o	x	o	o	o	11	15
Bane (D-40)	x	x	x	x	x	x	x	x	a	x	x	x	a	a	o	x	x	x	a	x	x	x	x	x	x	o	a	91	-
Bates (D-12)	x	x	a	x	x	x	x	x	x	x	x	x	x	x	x	x	x	x	x	x	x	x	x	x	x	a	x	100	100
Becerra (D-59)	x	x	x	x	x	x	x	x	x	x	x	x	x	x	x	x	x	x	x	x	x	x	x	x	x	a	a	100	100
Bentley (R-77)	o	o	o	o	o	o	a	o	o	o	x	o	o	o	o	o	o	o	o	o	a	o	x	a	o	o	o	8	12
Boland (R-38)	o	o	o	o	o	o	o	o	o	o	o	o	o	o	o	o	o	o	o	o	x	o	x	x	o	o	o	11	-
Bronzan (D-31)	x	x	x	x	x	x	x	x	x	x	x	x	x	x	o	a	x	x	x	x	x	x	o	x	x	o	o	85	-
Brown,W. (D-17)	x	x	x	x	x	x	x	x	x	x	x	x	a	x	x	a	x	x	x	x	x	x	x	x	x	o	o	92	-
Brulte (R-65)	o	o	o	o	o	o	o	o	o	x	x	a	o	o	o	o	o	o	o	o	o	o	a	x	o	o	o	12	10
Burton (D-16)	x	x	x	x	x	x	x	x	x	x	x	x	x	x	x	x	x	x	x	x	x	x	x	x	x	a	a	100	94
Campbell (D-11)	x	x	x	x	x	x	x	x	x	a	x	x	x	x	x	x	x	x	a	x	x	x	x	x	x	o	x	96	97
Cannella (D-27)	x	x	x	x	x	x	x	o	x	x	x	o	x	o	x	x	x	o	x	x	x	o	o	x	o	o	70	-	
Chacon (D-79)	x	x	x	x	x	a	x	x	x	x	x	x	x	x	x	x	x	x	x	x	x	x	x	x	x	o	x	96	-
Chandler (R-3)	o	o	o	o	o	o	o	o	o	o	o	o	o	o	o	o	o	o	o	o	o	o	o	o	o	o	o	0	4
Clute (D-68)	x	x	x	o	o	o	o	o	o	x	x	x	x	o	o	x	a	x	x	x	x	x	x	x	x	o	o	62	57
Connelly (D-6)	x	x	x	x	x	x	x	x	x	x	x	x	x	x	x	x	x	x	x	x	x	x	x	o	x	a	a	96	100
Cortese (D-24)	x	x	x	x	x	x	x	x	x	x	x	x	x	x	o	x	a	x	o	x	x	x	x	x	x	o	o	85	-
Costa (D-30)	x	x	x	x	x	o	x	x	x	x	o	x	x	o	x	x	x	o	x	x	x	o	x	x	o	o	74	61	
Eastin (D-18)	x	x	x	x	x	x	x	x	x	x	x	x	x	x	x	x	x	x	x	x	x	x	x	x	x	o	96	60	
Eaves (D-66)	x	x	x	a	x	o	o	x	a	x	x	a	a	x	o	x	x	x	o	x	x	a	a	x	x	o	o	71	67

x = pro-conservation vote

o = anti-conservation vote

a = absent or not voting

* = not in office

Assembly Floor	1. Air Toxics	2. Air Permits	4. New Agency	7. Increase Fines	8. Enforcement	9. Sanctuary	10. Offshore Oil	11. Corp. Probation	14. Global Warming	15. Alternative Fuels	16. Oil Use Reduction	17. Tree Planting	18. Timber Reform	20. Data Gaps	22. Weak Cal-EPA	23. Rail Accidents	24. Information	25. Environmtl. Equity	26. Toxics Transp.	27. Lead Testing	28. Coastal Pollution	29. Commuter Incen.	30. Rail Funding	32. Water Meters	34. Stream Protection	36. Public Works	39. Coalitions	Floor Score	Committee Score
Elder (D-57)	x	a	x	x	x	x	x	a	x	x	x	x	x	x	x	x	x	x	x	x	x	x	x	x	x	o	o	92	-
Epple (D-63)	x	x	x	x	x	a	a	x	x	x	a	x	x	x	a	x	x	x	o	x	x	x	x	x	x	o	o	87	81
Farr (D-28)	x	a	x	x	x	x	x	x	x	x	x	x	x	x	o	x	x	x	x	x	x	x	x	x	x	o	o	88	100
Felando (R-51)	o	x	o	o	o	o	o	x	o	o	o	o	x	x	x	x	x	a	o	o	x	o	x	x	x	o	o	42	50
Ferguson (R-70)	o	o	a	o	o	o	a	o	o	o	o	a	o	o	a	o	o	o	o	o	x	o	a	o	o	o	o	5	-
Filante (R-9)	x	o	x	x	x	x	x	x	x	x	x	x	x	x	x	x	x	o	x	x	x	x	x	x	x	o	o	85	73
Floyd (D-53)	x	x	x	x	a	a	x	x	o	o	o	x	a	x	x	x	x	x	o	x	x	x	x	a	x	o	x	78	-
Frazeo (R-74)	o	o	o	o	o	o	o	o	o	o	o	o	o	o	o	o	o	o	o	x	x	o	x	x	o	o	o	15	-
Friedman, B (D-46)	*	*	x	x	x	*	*	x	*	x	x	*	x	x	x	x	*	*	*	*	*	*	*	x	*	*	a	100	-
Friedman, T (D-43)	x	x	x	x	x	x	x	x	x	x	x	x	x	x	x	x	a	x	x	x	x	x	x	x	x	a	a	100	100
Frizzelle (R-69)	o	o	a	o	o	o	x	o	o	o	o	o	o	o	o	o	o	o	o	o	x	x	o	o	x	x	o	19	17
Gotch (D-78)	x	x	x	x	x	x	x	x	x	x	x	x	x	x	x	x	x	x	x	x	x	x	x	x	x	x	x	100	100
Hannigan (D-4)	x	x	x	x	x	x	x	x	x	x	x	x	x	x	o	x	x	x	x	x	x	x	a	x	x	o	o	88	83
Hansen (R-8)	o	o	x	o	o	x	x	o	o	x	x	o	o	o	o	x	o	o	o	x	x	o	o	o	o	o	o	30	18
Harvey (R-33)	o	o	o	o	o	o	o	x	o	o	o	o	o	o	a	o	o	o	o	o	x	a	o	o	o	o	o	8	-
Hauser (D-2)	x	x	x	x	x	x	x	x	x	x	x	x	x	x	o	x	x	x	o	x	x	x	o	o	x	o	o	78	100
Hayden (D-44)	x	x	a	x	x	x	x	x	x	a	x	x	x	x	x	x	x	x	x	x	x	x	x	x	x	a	a	100	100
Horchler (R-52)	o	o	o	o	o	o	o	o	o	o	o	o	o	o	o	o	o	o	o	o	o	o	x	x	x	o	o	11	-
Hughes (D-47)	x	x	x	x	x	x	x	x	x	x	x	x	x	x	a	x	x	x	o	x	x	x	x	x	x	o	o	88	82
Hunter (R-76)	o	o	x	x	x	x	x	o	x	x	o	o	x	o	o	o	o	o	x	o	o	x	o	x	x	o	o	48	-
Isenberg (D-10)	x	x	x	x	x	x	x	x	x	x	x	x	x	x	x	x	x	x	x	x	x	x	x	o	x	o	x	93	-
Johnson (R-64)	o	o	o	o	o	o	o	o	o	o	o	o	o	a	x	o	o	o	o	o	a	a	a	a	o	a	a	5	-
Jones (R-32)	o	o	o	o	o	o	o	a	o	a	o	o	o	a	o	o	o	o	o	a	o	o	o	a	o	o	o	0	-
Katz (D-39)	x	x	x	x	x	x	x	x	x	x	x	x	x	x	x	x	x	x	x	x	x	x	x	x	x	x	o	96	73
Kelley (R-73)	o	o	o	o	o	o	o	o	o	x	o	o	o	o	o	o	o	o	o	o	o	o	o	x	o	o	o	7	-
Klehs (D-14)	x	x	x	x	x	x	x	x	x	x	x	x	x	x	x	x	x	x	x	x	x	x	x	x	x	o	a	96	-

x = pro-conservation vote

o = anti-conservation vote

a = absent or not voting

* = not in office

Assembly Floor	1. Air Toxics	2. Air Permits	4. New Agency	7. Increase Fines	8. Enforcement	9. Sanctuary	10. Offshore Oil	11. Corp. Probation	14. Global Warming	15. Alternative Fuels	16. Oil Use Reduction	17. Tree Planting	18. Timber Reform	20. Data Gaps	22. Weak CalEPA	23. Rail Accidents	24. Information	25. Environmtl. Equity	26. Toxics Transp.	27. Lead Testing	28. Coastal Pollution	29. Commuter Incen.	30. Rail Funding	32. Water Meters	34. Stream Protection	36. Public Works	39. Coalitions	Floor Score	Committee Score
Knowles (R-7)	o	o	o	o	o	o	o	o	o	o	o	o	o	o	o	o	o	o	o	o	a	o	o	o	o	o	o	0	-
Lancaster (R-62)	o	o	a	o	o	o	a	o	o	o	o	o	o	o	a	o	o	o	o	o	o	a	x	a	o	o	o	5	-
Lee (D-13)	x	x	x	x	x	x	x	x	x	x	x	x	x	x	x	x	x	x	x	x	x	x	x	x	x	a	a	100	100
Lempert (D-20)	x	x	x	x	x	x	x	x	x	x	x	x	x	x	x	x	x	x	x	x	x	x	x	x	x	x	a	100	100
Margolin (D-45)	a	x	x	x	x	x	x	x	x	x	x	x	x	x	x	x	x	x	a	x	x	x	x	x	x	a	a	100	100
Mays (R-58)	o	o	a	a	a	x	x	o	o	x	x	o	o	o	x	o	o	o	o	o	x	a	o	x	o	o	o	30	-
McClintock (R-36)	o	o	a	o	o	o	o	o	o	a	o	o	o	o	x	o	o	o	o	o	o	o	o	o	o	o	o	4	0
Moore (D-49)	x	x	x	x	x	x	x	x	a	x	x	x	x	x	x	x	x	x	a	x	x	x	x	a	x	x	o	96	-
Mountjoy (R-42)	o	o	a	o	o	o	o	o	o	o	o	o	o	o	x	o	o	o	o	o	o	o	o	x	o	o	o	8	-
Murray (D-54)	x	x	x	x	x	o	o	x	x	x	x	o	x	x	o	x	a	x	o	x	x	x	x	x	x	o	o	73	77
Nolan (R-41)	o	a	o	o	o	o	o	o	o	o	o	o	o	o	x	o	o	o	o	o	o	o	o	x	o	o	o	8	14
O'Connell (D-35)	x	x	x	x	x	x	x	x	x	x	x	x	x	x	x	x	x	x	x	x	x	x	a	x	x	o	o	92	83
Peace (D-80)	x	x	x	x	x	a	x	o	x	x	x	x	x	x	o	x	x	a	o	x	x	x	o	x	x	a	o	79	-
Polanco (D-55)	x	x	x	x	x	x	x	x	x	x	x	x	x	x	a	x	x	x	x	x	x	x	a	x	x	a	o	96	89
Quackenbsh (R-22)	o	o	o	o	o	x	x	x	x	o	x	o	o	o	o	o	a	o	o	o	o	o	x	x	x	o	o	31	53
Roybal-Alrd (D-56)	x	x	x	x	x	x	x	x	x	x	x	x	x	x	x	x	x	x	x	x	x	x	x	x	x	a	a	100	97
Seastrand (R-29)	o	o	o	o	o	x	a	o	o	o	o	o	o	o	x	o	o	o	o	o	a	o	o	o	o	o	o	8	-
Sher (D-21)	x	x	x	x	x	x	x	x	x	x	x	a	x	x	x	x	x	x	x	x	x	a	a	x	x	x	x	100	100
Speier (D-19)	x	a	x	x	x	x	a	x	x	x	x	x	x	x	x	x	x	x	x	x	x	x	x	x	x	x	x	100	-
Statham (R-1)	o	o	a	o	o	o	o	o	o	o	o	o	a	x	o	x	o	o	o	o	x	a	o	o	o	o	o	13	-
Tanner (D-60)	x	x	x	x	x	x	x	x	x	x	x	x	x	x	x	x	x	x	a	x	x	x	x	a	x	a	o	96	100
Tucker (D-50)	x	x	x	x	x	x	x	x	x	a	o	x	x	x	o	x	x	x	o	x	x	x	x	x	x	o	o	81	87
Umberg (D-72)	x	x	x	x	x	a	x	x	x	x	x	a	x	x	x	x	x	o	x	a	a	a	x	x	x	o	91	100	
Vasconcellos (D-23)	a	x	a	x	x	x	x	x	x	a	x	x	x	x	o	x	x	x	a	x	x	x	x	a	x	a	o	90	93
Woodruff (R-61)	o	o	o	o	o	o	o	o	o	a	x	o	o	o	o	o	o	o	o	o	a	o	x	x	x	o	o	16	22
Wright (R-37)	o	o	o	o	o	o	o	x	o	o	o	o	o	o	x	x	o	o	o	o	o	o	o	o	x	o	o	15	11
Wyman (R-34)	o	o	a	o	o	o	o	o	o	o	o	o	o	o	a	o	o	o	o	o	a	o	o	o	o	o	o	0	-

x = pro-conservation vote

o = anti-conservation vote

a = absent or not voting

* = not in office

Environmental Safety	2. Air Permits	21. School Children	23. Rail Accidents	24. Information	26. Toxics Transp.	28. Coastal Pollution
Becerra (D-59)	x	x	x	x	x	x
Brulte (R-65)	o	a	x	o	o	o
Chandler (R-3)	o	o	x	o	o	o
Gotch (D-78)	x	x	x	x	a	x
Jones (R-32)	*	*	a	a	o	a
Katz (D-39)	x	x	x	a	o	a
Lee (D-13)	x	x	x	x	x	x
Lempert (D-20)	x	x	x	x	a	x
McClintock (R-36)	o	a	a	o	o	o
Sher (D-21)	x	x	x	x	a	x
TANNER (D-60)	x	x	x	x	a	x
Umberg (D-72)	x	x	x	x	o	x
Wright (R-37)	o	o	x	o	o	o

Water, Parks & Wildlife	32. Water Meters	34. Stream Protection
Campbell (D-11)	x	x
CORTESE (D-24)	x	x
Costa (D-30)	x	a
Filante (R-9)	x	x
Harvey (R-33)	a	o
Hauser (D-2)	a	x
Isenberg (D-10)	o	x
Jones (R-32)	x	o
Katz (D-39)	x	x
Kelley (R-73)	x	x
Peace (D-80)	x	x
Speier (D-19)	x	x
Wyman (R-34)	a	o

Utilities & Commerce	23. Rail Accidents
Boland (R-38)	o
Epple (D-63)	x
Filante (R-9)	x
Floyd (D-53)	x
Horcher (R-52)	a
Hughes (D-47)	x
Knowles (R-7)	o
MOORE (D-49)	x
Mountjoy (R-42)	o
Murray (D-54)	x
Peace (D-80)	x
Polanco (D-55)	x
Roybal-Allard (D-56)	x
Tucker (D-50)	x
Wright (R-37)	o

Agriculture	20. Data Gaps
AREIAS (D-25)	x
Bronzan (D-31)	x
Cannella (D-27)	x
Clute (D-68)	a
Cortese (D-24)	a
Costa (D-30)	x
Harvey (R-33)	x
Kelley (R-73)	o
Seastrand (R-29)	o

Public Safety	11. Corp. Probation
Bates (D-12)	x
Boland (R-38)	o
BURTON (D-16)	x
Lee (D-13)	x
Quackenbush (R-22)	x
Umberg (D-72)	x



Deidre Alpert earned a perfect 100% environmental score during her first year in office.

Upper case names indicate committee chairs.

x = pro-conservation vote

o = anti-conservation vote

a = absent or not voting

* = not in office

Health	20. Data Gaps	27. Lead Testing
Allen (R-71)	x	x
Alpert (D-75)	x	x
BRONZAN (D-31)	x	x
Burton (D-16)	x	x
Felando (R-51)	x	x
Filante (R-9)	o	x
Hunter (R-76)	x	o
Isenberg (D-10)	x	x
Katz (D-39)	a	*
Kelley (R-3)	o	o
Margolin (D-45)	x	x
Polanco (D-55)	x	x
Roybal-Allard (D-56)	x	x
Speier (D-19)	x	x
Statham (R-1)	a	x
Tucker (D-50)	x	x

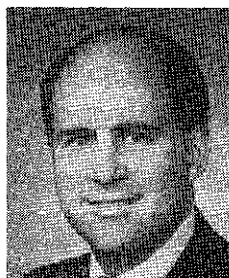
Transportation	15. Alternative Fuels	30. Rail Funding	29. Commuter Incen.
Alpert (D-75)	x	x	x
Areias (D-25)	x	o	x
Baker (R-15)	o	o	o
Clute (D-68)	x	o	x
Costa (D-30)	x	o	x
Eastin (D-18)	x	x	x
Eaves (D-66)	x	x	x
Frazee (R-74)	x	x	o
Hansen (R-8)	o	o	a
KATZ (D-39)	x	x	x
Lancaster (R-62)	a	x	a
Lee (D-13)	x	x	x
Lempert (D-20)	x	x	x
McClintock (R-36)	a	o	o
Umberg (D-72)	x	x	x
Woodruff (R-61)	x	x	a

Elections & Reapportionment	38. Revenue Limits	39. Coalitions
Archie-Hudson (D-48)	o	a
Baker (R-15)	x	o
Bane (D-40)	o	a
Bentley (R-77)	x	o
CHACON (D-79)	o	x
Costa (D-30)	o	o
Eastin (D-18)	o	o
Eaves (D-66)	o	o
Elder (D-57)	o	o
Hannigan (D-4)	o	o
Hansen (R-8)	x	o
Hughes (D-47)	o	a
Katz (D-39)	o	o
Klehs (D-14)	o	x
Margolin (D-45)	a	a
Mountjoy (R-42)	x	o
Nolan (R-41)	x	o
Quackenbush (R-22)	x	o

Upper case names indicate committee chairs.



During her first year in the Assembly, Barbara Lee (D-13) earned a 100% environmental score both on the floor and in committee. She also authored the Toxics Truth Act.



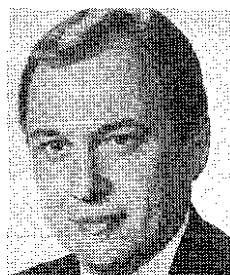
Freshman David Knowles (R-7) earned an abysmal 0% environmental floor score in 1991 during his first year in office.

x = pro-conservation vote o = anti-conservation vote a = absent or not voting * = not in-office

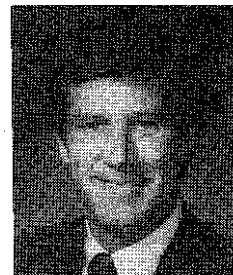
Natural Resources	1. Air Toxics	2. Air Permits	3. Air Enforcement	4. New Agency	7. Increase Fines	8. Enforcement	9. Sanctuary	10. Offshore Oil	12. Bottle Recycling	13. Recycled Content	14. Global Warming	16. Oil Use	17. Tree Planting	18. Timber - Hauser	18. Timber - Sher	18. Timber - McCorqu.	18. Timber - Keene	25. Env. Equity
Allen (R-71)	o	o	o	o	o	o	a	x	o	o	o	x	a	x	x	o	o	o
Bates (D-12)	x	x	x	x	x	x	x	x	x	x	x	x	x	x	x	x	x	x
Bentley (R-77)	o	o	o	o	o	o	o	a	o	o	o	x	o	o	o	a	a	o
Brulte (R-65)	o	o	o	o	o	o	o	a	o	o	o	x	o	o	o	a	a	o
Chandler (R-3)	o	o	o	o	o	o	o	o	o	o	o	o	o	o	o	o	o	o
Connelly (D-6)	a	a	a	x	x	x	x	x	x	x	a	x	a	a	a	x	x	x
Farr (D-28)	x	x	x	x	x	x	x	x	x	x	x	x	x	x	x	x	x	x
Friedman, T. (D-43)	x	x	x	x	x	x	x	a	x	x	x	x	x	x	x	x	x	x
Frizzelle (R-69)	o	o	o	o	o	x	o	x	o	a	a	o	o	a	a	a	a	o
Gotch (D-78)	x	x	x	x	x	x	x	x	x	x	x	x	x	x	x	x	x	x
Hauser (D-2)	x	x	x	x	x	x	x	x	a	x	x	x	x	x	x	x	x	x
Hayden (D-44)	x	x	x	x	x	x	x	x	x	x	x	x	x	x	x	a	a	x
Margolin (D-45)	x	x	x	a	a	x	x	x	x	x	x	x	x	x	x	x	x	x
Quackenbush (R-22)	o	o	o	x	o	a	x	x	a	a	x	a	o	x	x	a	a	o
SHER (D-21)	x	x	x	x	x	x	x	x	x	x	x	x	x	x	x	x	x	x



Assembly Member Tom Hayden (D-44) earned a perfect environmental score and authored an important global warming bill in 1991.



In 1991, Bill Jones (R-32) became Minority Floor Leader, which puts him in a powerful position to influence GOP votes. Unfortunately, he earned the lowest possible environmental floor score (0%).



Freshman Mike Gotch (D-78) had a perfect attendance record on the votes recorded by CLCV. He also earned a 100% environmental score both on the floor and in committee.

x = pro-conservation vote

o = anti-conservation vote

a = absent or not voting

* = not in office

Ways & Means	1. Air Toxics	2. Air Permits	3. Air Enforcement	7. Increase Fines	8. Enforcement	9. Sanctuary	10. Offshore Oil	11. Corp. Probation	12. Bottle Recycling	13. Recycled Content	14. Global Warming	15. Oil Use	16. Alternative Fuel	17. Tree Planting	18. Timber - Hauser	18. Timber - Sher	18. Timber - McCorq.	18. Timber - Keene	20. Data Gaps	21. School Children	23. Rail Accidents	24. Information	25. Env. Equity	26. Toxics Transp.	27. Lead Testing	28. Coastal Pollution	30. Rail Funding	34. Stream Protection	36. Public Works	38. Revenue Limits	39. Coalitions	
Allen (R-71)	*	*	*	o	o	*	*	a	*	o	o	o	x	*	*	*	o	o	x	a	x	*	o	a	o	*	*	x	x	x	o	
Baker (R-15)	o	o	a	o	o	o	o	o	o	o	o	o	x	o	o	o	o	o	x	o	o	o	o	a	o	o	o	x	o	x	o	
Burton (D-16)	x	x	x	x	x	x	x	x	x	x	x	x	x	x	x	x	x	x	a	a	a	x	x	x	x	x	x	x	o	o	x	
Campbell (D-11)	x	x	x	x	x	x	x	x	x	x	x	a	a	x	x	x	x	x	x	x	x	x	x	a	x	x	x	x	x	o	x	
Clute (D-68)	a	x	o	a	o	o	o	o	o	x	a	x	x	x	x	x	x	x	o	o	x	a	x	o	x	x	x	x	o	o	o	
Costa (D-30)	a	x	o	o	x	o	x	o	o	a	x	x	x	x	x	x	x	x	x	o	x	x	x	o	x	x	o	x	o	o	o	
Eaves (D-66)	a	x	o	a	x	o	o	x	a	o	x	x	x	x	x	x	x	x	x	o	x	x	x	o	x	x	x	x	o	o	o	
Epple (D-63)	a	x	a	x	x	x	a	x	a	a	x	x	x	x	x	x	x	x	x	o	x	x	x	o	x	x	x	x	o	o	o	
Felando (R-51)	a	o	o	o	o	o	a	o	o	a	o	x	x	o	x	x	a	a	x	a	x	a	o	a	o	x	x	x	a	a	a	
Filante (R-9)	*	*	*	x	x	*	*	x	o	a	x	x	x	*	*	*	x	x	x	a	a	*	o	a	x	o	*	x	o	x	o	
Frizzelle (R-69)	o	o	o	o	o	o	x	o	a	o	o	o	x	o	a	a	o	o	a	a	x	o	o	o	o	a	o	o	x	a	o	
Hannigan (D-4)	x	x	x	x	x	x	x	x	o	o	x	x	x	x	x	x	x	x	x	a	x	x	x	x	x	x	x	x	o	o	o	
Hansen (R-8)	o	o	o	o	o	x	x	o	o	o	o	o	x	o	o	o	o	o	o	o	x	o	o	o	o	o	o	o	x	o	a	o
Hughes (D-47)	a	x	x	x	x	x	x	x	o	o	x	x	x	x	x	x	x	x	x	x	x	x	a	o	x	x	x	x	a	o	a	
Murray (D-54)	x	x	o	x	x	o	o	x	x	x	x	x	x	x	x	x	x	x	x	a	x	x	x	o	x	x	x	x	o	o	o	
Nolan (R-41)	o	o	o	o	o	o	a	o	o	o	o	o	x	o	o	o	o	o	o	o	a	o	o	o	o	o	a	x	o	x	a	
O’Connell (D-35)	x	x	x	x	x	x	x	x	o	x	x	x	x	x	x	x	x	x	x	a	x	x	x	x	x	x	o	x	o	o	o	
Polanco (D-55)	x	x	a	x	x	x	x	x	a	x	x	x	x	a	x	x	x	x	x	a	a	x	a	o	x	x	a	x	o	o	x	
Roybl-Alrd. (D-56)	x	x	x	x	x	x	x	x	x	x	x	x	x	x	x	x	x	x	a	x	x	x	x	x	x	a	x	a	o	a	a	
Tucker (D-50)	x	x	x	x	x	x	x	x	x	x	x	x	x	a	x	o	x	x	a	x	a	x	x	o	x	x	x	x	o	o	x	
VASCO. (D-23)	x	x	a	x	x	x	x	x	a	x	x	x	x	x	x	x	x	x	o	x	x	x	a	x	x	x	x	o	a	x		
Woodruff (R-61)	a	o	a	o	o	o	o	o	o	o	o	a	a	a	o	o	a	a	a	o	a	o	o	o	o	o	x	x	x	a	o	
Wright (R-37)	o	o	o	o	o	o	o	o	o	o	o	o	o	o	o	o	o	o	o	o	o	o	o	o	o	o	o	x	x	x	o	

x = pro-conservation vote

o = anti-conservation vote

a = absent or not voting

* = not in office

Senate Floor	1. Air Toxics	2. Air Permits	4. New Agency	5. Indirect Sources	7. Increase Fines	8. Enforcement	10. Offshore Oil	11. Corporate Prob.	15. Alternative Fuel	16. Oil Use Reduction	17. Tree Planting	18. Timber Reform	19. Farmworkers	20. Data Gaps	21. School Children	22. Weak Cal-EPA	23. Rail Accidents	25. Envrnmntl. Equity	27. Lead Testing	30. Rail Funding	31. Groundwater	32. Water Meters	34. Stream Protection	38. Revenue Limits	39. Coalitions	Floor Score	Committee Score
Alquist (D-13)	x	x	a	x	x	x	o	x	x	a	x	x	x	x	a	o	a	x	x	x	x	x	a	o	a	84	79
Ayala (D-34)	x	a	a	a	a	a	o	a	a	a	x	o	a	a	x	o	a	x	x	x	a	a	a	a	a	a	a
Bergeson (R-37)	o	x	a	o	o	o	x	o	x	x	o	o	a	x	a	o	a	x	x	x	o	x	x	o	a	50	64
Beverly (R-29)	o	x	o	o	x	o	x	x	a	a	o	a	x	o	x	o	a	x	a	x	o	x	a	a	o	50	60
Boatwright (D-7)	x	x	x	o	x	x	x	x	a	x	o	x	x	x	a	o	x	x	x	x	x	x	a	o	o	77	-
Calderon (D-26)	x	a	a	o	a	a	x	x	x	x	x	a	x	x	x	a	x	a	x	x	x	a	o	a	a	87	-
Craven (R-38)	x	a	o	a	x	x	a	a	a	x	x	a	x	x	x	a	x	x	a	x	a	a	a	o	a	a	40
Davis (R-19)	x	a	x	o	x	x	o	o	x	x	x	a	x	x	x	o	x	a	x	a	x	x	a	o	x	75	83
Deddeh (D-40)	o	x	x	o	x	o	x	x	x	x	o	x	x	x	x	o	x	x	x	x	x	x	x	o	o	72	-
Dills (D-30)	x	x	x	o	o	o	a	x	x	x	x	o	x	x	x	x	x	a	x	a	x	x	x	o	o	73	80
Green,C. (D-33)	x	x	x	o	a	o	a	x	x	x	o	x	x	a	a	o	x	x	a	o	o	o	x	o	o	55	57
Greene,B. (D-27)	a	a	a	a	x	a	a	a	a	a	a	a	x	x	a	a	a	a	a	a	x	a	a	o	x	a	-
Greene,L. (D-6)	x	x	x	o	x	x	x	a	a	x	o	x	x	x	x	o	x	x	x	x	x	o	x	o	o	74	80
Hart (D-18)	x	x	x	x	x	x	x	x	a	x	x	x	x	x	a	x	x	x	a	x	x	x	x	x	o	95	100
Hill (R-31)	o	o	a	a	o	o	x	o	a	x	o	o	o	o	o	o	o	o	o	x	a	x	x	o	a	25	60
Johnston (D-5)	x	x	a	o	x	x	x	x	x	x	x	x	x	x	o	o	x	x	x	a	x	x	x	o	o	78	100
Keene (D-2)	x	x	x	x	x	x	x	x	x	x	a	x	x	a	x	a	x	x	a	o	x	a	x	o	o	85	100
Killea (I-39)	x	x	x	x	x	x	x	x	x	x	x	x	x	x	x	o	x	x	x	x	x	x	x	o	a	92	93
Kopp (I-8)	o	a	x	o	o	x	o	x	x	x	o	x	x	x	x	x	x	x	x	x	x	x	o	x	o	71	90
Leonard (R-25)	o	o	a	o	o	a	x	o	x	x	o	o	o	o	o	o	o	a	o	o	o	x	o	x	o	23	26
Lewis (R-35)	o	o	o	o	o	o	a	o	o	o	o	o	o	o	a	o	o	o	a	x	o	*	x	x	o	14	-
Leslie (R-1)	o	o	o	o	o	o	o	o	x	o	o	a	o	*	o	o	a	o	x	o	o	*	x	x	o	19	20
Lockyer (D-10)	a	x	x	o	x	x	x	x	x	a	x	x	x	x	x	o	x	x	x	x	x	x	x	o	a	86	87
Maddy (R-14)	o	o	o	o	o	o	x	o	x	x	o	o	o	o	o	o	o	o	x	o	o	a	o	o	o	17	43
Marks (D-3)	x	a	x	x	x	x	x	x	x	x	x	x	x	a	x	x	x	a	x	a	x	a	x	o	a	95	100
McCorquodale (D-12)	x	x	x	x	a	x	x	x	x	x	x	x	o	x	a	o	x	x	a	o	x	x	x	a	a	85	79

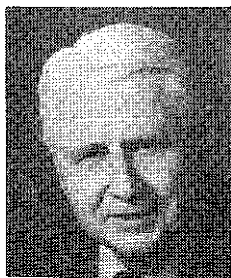
x = pro-conservation vote

o = anti-conservation vote

a = absent or not voting

* = not in office

Senate Floor	1. Air Toxics	2. Air Permits	4. New Agency	5. Indirect Sources	7. Increase Fines	8. Enforcement	10. Offshore Oil	11. Corporate Prob.	15. Alternative Fuel	16. Oil Use Reduction	17. Tree Planting	18. Timber Reform	19. Farmworkers	20. Data Gaps	21. School Children	22. Weak Cal-EPA	23. Rail Accidents	25. Envrnmntl. Equity	27. Lead Testing	30. Rail Funding	31. Groundwater	32. Water Meters	34. Stream Protection	38. Revenue Limits	39. Coalitions	Floor Score	Committee Score
Mello (D-17)	x	x	x	o	x	x	x	x	x	x	o	x	x	a	x	o	x	a	a	a	x	x	a	o	x	80	73
Morgan (R-11)	a	a	a	a	a	a	x	o	a	x	o	a	o	o	x	o	a	a	x	x	x	x	x	a	x	a	-
Petris (D-9)	x	x	x	a	x	x	x	x	x	x	x	x	x	x	x	x	x	x	a	x	x	x	a	o	o	91	-
Presley (D-36)	x	x	x	x	x	x	o	x	x	x	x	x	x	x	x	o	x	o	x	x	x	x	x	o	o	80	90
Robbins (D-20)	a	a	a	a	x	a	x	x	a	a	a	a	x	x	a	o	a	x	a	a	x	a	x	o	a	a	-
Roberti (D-23)	x	x	x	a	x	x	x	x	x	x	x	x	x	x	x	a	x	x	x	a	x	x	x	o	o	91	71
Rogers (R-16)	a	o	a	o	o	a	o	o	o	o	o	o	a	o	o	a	o	o	o	o	o	o	o	x	o	5	0
Rosenthal (D-22)	x	a	x	x	x	x	x	x	x	x	x	x	a	x	x	o	x	x	x	x	x	a	x	o	x	91	94
Royce (R-32)	o	o	a	o	o	a	o	o	o	a	o	o	a	x	o	o	o	o	o	o	o	a	o	x	o	10	63
Russell (R-21)	o	o	x	a	o	o	o	x	x	x	o	o	a	a	o	o	o	o	x	x	o	x	a	o	o	33	-
Thompson (D-4)	x	x	x	o	x	x	x	x	x	x	o	x	o	x	x	o	x	a	x	o	x	x	x	o	a	74	83
Torres (D-24)	x	x	x	a	a	x	x	x	x	x	x	x	x	a	x	x	x	x	x	x	x	x	a	o	o	90	95
Vuich (D-15)	a	x	o	o	o	o	a	x	x	x	x	x	o	o	x	o	x	x	a	a	x	x	a	o	o	55	80
Watson (D-28)	a	x	x	a	x	x	x	x	a	a	x	x	x	a	a	o	x	x	x	x	x	x	x	o	a	89	100



Retiring Senator Ed Davis (R-19) earned the highest environmental score of any Republican legislator and authored a successful bill to protect the coast from illegal development (SB 317).



Lucy Killea (I-39) continued to author important energy legislation, including the successful Oil Use Reduction Act (SB 1214).



Senator Quentin Kopp (I-8) authored a bad initiative bill that restricts the ability of conservationists to put initiatives on the ballot.

x = pro-conservation Vote

o = anti-conservation vote

a = absent or not voting

* = not in office

Appropriations	7. Increase Fines	10. Offshore Oil	17. Tree Planting	18. Timber - Hauser	18. Timber - Sher	18. Timber - McCorq.	18. Timber - Keene	19. Farmworkers	20. Data Gaps	21. School Children	28. Coastal Pollut.	27. Lead Testing	30. Rail Funding	31. Groundwater
Alquist (D-13)	x	a	x	x	x	x	x	a	x	x	a	a	x	x
Ayala (D-34)	*	a	*	x	x	a	a	a	a	*	a	x	x	a
Bergeson (R-37)	a	x	o	x	o	x	x	a	o	x	x	x	x	o
Beverly (R-29)	x	x	a	x	x	o	o	x	o	o	x	x	a	a
Davis (R-19)	x	o	x	x	x	x	x	x	x	a	x	x	a	x
Dills (D-30)	o	a	x	x	x	x	x	x	x	x	x	a	x	x
Greene, L. (D-6)	x	x	a	x	x	x	x	a	a	a	x	a	x	a
Killea (D-39)	x	x	x	x	x	a	a	a	x	x	x	x	a	x
Leonard (R-25)	o	x	o	o	o	o	o	x	o	x	a	o	o	o
Lockyer (D-10)	x	x	x	x	x	x	x	x	x	x	x	x	x	x
PRESLEY (D-36)	x	o	x	x	x	x	x	x	x	x	x	x	x	x
Torres (D-24)	x	x	x	x	x	x	x	x	x	a	x	a	x	x

Elections & Reapportionment	38. Revenue Limits	39. Coalitions
Bergeson (R-37)	o	o
Beverly (R-29)	a	o
Boatwright (D-7)	o	o
Craven (R-36)	o	o
Greene, B. (D-27)	a	a
Lockyer (D-10)	o	o
Maddy (R-14)	o	o
MARKS (D-3)	a	a
Roberti (D-23)	o	o
Rosenthal (D-22)	o	x
Torres (D-24)	a	a

Agriculture & Water Resources	31. Groundwater	32. Water Meters	35. Auburn Dam
AYALA (D-34)	x	x	o
Craven (R-38)	x	a	o
Green, C. (D-33)	x	o	o
Mello (D-17)	a	x	o
McCorquodale (D-12)	x	x	a
Presley (D-36)	x	o	a
Roberti (D-23)	x	x	a
Rogers (R-16)	o	o	o
Thompson (D-4)	x	x	o
Vuich (D-15)	x	x	o

Energy & Public Utilities	14. Global Warming
Alquist (D-13)	a
Hart (D-18)	x
Greene, L. (D-6)	a
Johnston (D-5)	x
Killea (I-39)	x
Mello (D-17)	x
Morgan (R-11)	o
ROSENTHAL (D-22)	x
Russell (R-21)	a

Upper case names indicate committee chairs.

Constitutional Amendments	37. Park Bond	38. Revenue Limits
Alquist (D-13)	o	o
Hart (D-18)	x	x
Maddy (R-14)	x	o
McCorquodale (D-12)	o	o
ROYCE (R-32)	o	x

x = pro-conservation vote

o = anti-conservation vote

a = absent or not voting

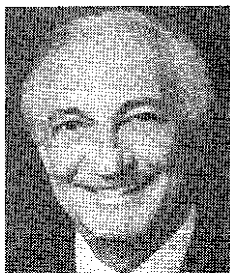
* = not in office

Governmental Organization	5. Indirect Sources	10. Offshore Oil	15. Alternative Fuel
Alquist (D-13)	x	o	a
Beverly (R-29)	o	x	x
DILLS (D-30)	o	o	x
Greene, B. (D-2)	a	a	x
Hill (R-31)	o	x	x
Keene (D-2)	x	x	x
Lockyer (D-10)	o	x	x
Maddy (R-14)	o	a	x
Mello (D-17)	a	o	a
Rosenthal (D-22)	x	x	x
Torres (D-24)	o	x	x

Judiciary	1. Air Toxics	11. Corp. Probation	34. Stream Protec.
Davis (R-19)	x	o	x
Keene (D-2)	x	x	x
Leslie (R-1)	o	*	x
LOCKYER (D-10)	x	x	x
Marks (D-3)	x	a	a
Petris (D-9)	x	x	a
Presley (D-36)	x	x	x
Roberti (D-23)	x	x	x
Royce (R-32)	o	o	x
Torres (D-24)	a	x	a
Watson (D-28)	x	x	a

Health & Human Services	20. Data Gaps	27. Lead Testing
Bergeson (R-37)	x	a
Calderon (D-26)	a	a
Deddeh (D-40)	x	x
Maddy (R-14)	a	x
Mello (D-17)	a	x
Rosenthal (D-22)	x	x
Royce (R-32)	x	x
Thompson (D-4)	a	x
WATSON (D-28)	x	a

Upper case names indicate committee chairs.



Nicholas Petris (D-9) authored three significant pesticide protection bills in 1988. He also earned a 91% environmental floor score.

Housing & Urban Affairs	33. Low-flow toilets
Calderon (D-26)	x
GREENE, L. (D-6)	o
Killea (I-39)	x
Kopp (I-8)	x
Leonard (R-25)	x
Marks (D-3)	a

Industrial Regulations	19. Farmworkers
GREENE, B. (D-2)	x
Greene, L. (D-6)	o
Leonard (R-25)	x
Lockyer (D-10)	x
Petris (D-9)	x
Rosenthal (D-22)	x
Royce (R-32)	x

x = pro-conservation vote

o = anti-conservation vote

a = absent or not voting

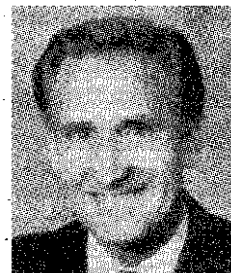
* = not in office

Toxics & Public Safety	2. Air Permits	21. School Children	23. Rail Accidents	24. Information	28. Coastal Pollut.
Killea (I-39)	*	*	x	*	*
Kopp (I-8)	x	x	x	o	x
Leonard (R-25)	o	o	a	o	o
Leslie (R-1)	o	*	*	o	o
Rosenthal (D-22)	a	x	x	x	x
TORRES (D-24)	x	x	x	x	x
Watson (D-28)	x	x	*	x	x

Local Government	4. New Agency	25. Env. Equity
Ayala (D-34)	a	a
BERGESON (R-37)	a	x
Calderon (D-26)	x	x
Craven (R-38)	x	a
Green, C. (D-33)	x	x
Hill (R-31)	x	o
Kopp (I-8)	x	x
Russell (R-21)	x	o
Thompson (D-4)	x	x

Transportation	6. Drive Plus	26. Toxics Transp.
Ayala (D-34)	x	a
Bergeson (R-37)	a	o
Boatwright (D-7)	a	o
Green, C. (D-33)	x	o
Killea (I-39)	x	o
KOPP (I-8)	x	x
McCorquodale (D-12)	x	x
Morgan (R-11)	o	o
Robbins (D-20)	a	a
Russell (R-21)	o	o
Vuich (D-15)	x	x

Natural Resources	7. Increase Fines	8. Corp. Probation	17. Tree Planting	18. Timber - Hauser	18. Timber - Sher	18. Timber - McCorq.	18. Timber - Keene	37. Park Bond
Bergeson (R-37)	x	a	o	x	a	x	x	o
Davis (R-19)	x	x	x	x	x	o	o	x
Hart (D-18)	x	x	x	x	x	x	x	x
Johnston (D-5)	x	x	a	a	a	x	x	x
Marks (D-3)	a	x	x	x	x	a	a	x
McCORQUODALE (D-12)	x	x	x	x	x	x	x	o
Mello (D-17)	x	x	o	a	a	x	x	x
Rogers (R-16)	o	o	o	o	o	o	o	o
Rosenthal (D-22)	*	*	x	x	x	*	*	a



For the second year in a row Don Rogers (R-16) earned both the lowest floor score (0%) and the lowest committee score (0%).

x = pro-conservation vote

o = anti-conservation vote

a= absent or not voting

* = not in office

Assembly Roster

Below is a district-order listing of Assembly Members during the 1991 Legislative session. The description for each Assembly Member includes their occupation, a listing of their environmental committee assignment(s), and a brief history of their environmental scores on the floor (F) and in committee (C). Assembly members are up for re-election every 2 years. To contact your Assembly Member about his or her environmental voting record please call the district phone number listed below or write

Assembly Member
California State Assembly
State Capitol
Sacramento, CA 95814

1. Statham, Stan (R)

District Office:
(916) 223-6300
Full-time legislator
Elected in 1976.
Member of Agriculture; Health.
1991: 13% F
1990: 53% F
1989: 57% F

2. Hauser, Dan (D)

District Office:
(707) 445-7014
Full-time legislator
Elected in 1982.
Member of Natural Resources;
Water, Parks & Wildlife.
1991: 78% F, 100% C
1990: 94% F
1989: 86% F, 60% C

3. Chandler, Chris (R)

District Office:
(916) 673-2201
Attorney
Elected in 1986.
Member of Natural Resources;
Environmental Safety & Toxic
Materials.
1991: 0% F, 4% C
1990: 16% F
1989: 39% F

4. Hannigan, Thomas (D)

District Office:
(707) 429-2383
Realtor
*Elected in 1978, Majority Floor
Leader.*
Member of Elections,
Reapportionment & Constitutional
Amendments; Ways & Means.
1991: 88% F, 83% C
1990: 95% F, 100% C
1989: 100% F, 100% C

5. Collins, B.T. (R)

District Office:
(916) 969-3660
Full-time legislator
*Elected in 1991. Replaced Tim
Leslie who was elected to the
Senate.*

6. Connelly, Lloyd (D)

District Office:
(916) 443-1183
Attorney
Elected in 1982.
Member of Natural Resources.
1991: 96% F, 100% C
1990: 100% F, 100% C
1989: 100% F, 100% C

7. Knowles, David (R)

District Office:
(916) 676-5953
Mortgage banker
Elected in 1990.
1991: 0% F

8. Hansen, Bev (R)

District Office:
(707) 546-4500
Full-time legislator
Elected in 1986.
Member of Elections,
Reapportionment & Constitutional
Amendments; Transportation;
Ways & Means.
1991: 30% F, 18% C
1990: 25% F, 26% C
1989: 62% F, 70% C

9. Filante, William (R)

District Office:
(415) 479-4920
Ophthalmologist
Elected in 1978.
Member of Health; Water, Parks &
Wildlife.
1991: 85% F, 73% C
1990: 79% F
1989: 97% F, 80% C

10. Isenberg, Phil (D)

District Office:
(916) 324-4676
Attorney
Elected in 1982.
Member of Health; Water, Parks &
Wildlife.
1991: 93% F
1990: 100% F
1989: 97% F, 100% C

11. Campbell, Robert J. (D)

District Office:
(510) 237-8171
Businessman
Elected in 1980.
Member of Water Parks &
Wildlife; Ways & Means.
1991: 96% F, 97% C
1990: 100% F, 100% C
1989: 100% F, 100% C

12. Bates, Tom (D)

District Office:
(510) 540-3176
Full-time legislator
Elected in 1976.
Member of Natural Resources;
Public Safety.
1991: 100% F, 100% C
1990: 100% F, 100% C
1989: 100% F, 100% C

13. Lee, Barbara (D)

District Office:
(510) 464-0339
Full-time legislator
Elected in 1990.
Member of Public Safety;
Transportation; Environmental
Safety & Toxic Materials.
1991: 100% F, 100% C

14. Klehs, Johan (D)

District Office:
(510) 464-0847
Full-time legislator
Elected in 1982.
Member of Elections,
Reapportionment & Constitutional
Amendments.
1991: 96% F
1990: 100% F
1989: 100% F

15. Baker, William (R)

District Office:
(510) 932-2537
Businessman
Elected in 1980.
Vice Chair of Ways & Means.
Member of Transportation;
Elections, Reapportionment &
Constitutional Amendments.
1991: 11% F, 15% C
1990: 10% F, 0% C
1989: 18% F, 29% C

16. Burton, John (D)

District Office:
(415) 557-2253
Full-time legislator
*Assembly member 1965-74,
Congressman 1974-1982,
Re-elected to Assembly in 1988.*
Chair of Public Safety. Member of
Health; Ways & Means.
1991: 100% F, 94% C
1990: 100% F, 100% C
1989: 100% F, 100% C

17. Brown, Willie L. (D)

District Office:
(415) 557-0784
Attorney
*Elected in 1964, Assembly Speaker
since 1980.*
The Speaker is a member of all
Assembly committees.
1991: 92% F
1990: 95% F
1989: 100% F

18. Eastin, Delaine (D)

District Office:
(510) 791-2151

Full-time legislator
Elected in 1986.
Member of Elections,
Reapportionment & Constitutional
Amendments; Transportation.
1991: 96% F, 60% C
1998: 100% F, 100% C
1989: 100% F, 100% C

19. Speier, Jacqueline (D)

District Office:
(415) 871-4100
Full-time legislator
Elected in 1986.
Member of Water, Parks and
Wildlife; Health.
1991: 100% F
1990: 95% F, 100% C
1989: 100% F, 96% C

20. Lempert, Ted (D)

District Office:
(415) 571-9521
Attorney
Elected in 1988.
Member of Transportation;
Environmental Safety & Toxic
Materials.
1991: 100% F, 100% C
1990: 95% F
1989: 100% F

21. Sher, Byron (D)

District Office:
(415) 961-6031
Professor of Law
Elected in 1980.
Chair of Natural Resources.
Member of Environmental Safety
& Toxic Materials.
1991: 100% F, 100% C
1998: 100% F, 94% C
1989: 100% F, 100% C

22. Quackenbush, Charles (R)

District Office:
(408) 446-4114
Full-time legislator
Elected in 1986.
Member of Ways & Means;
Natural Resources; Elections,
Reapportionment & Constitutional
Amendments,
1991: 32% F, 53% C
1990: 37% F, 20% C
1989: 39% F

23. Vasconcellos, John (D)

District Office:
(408) 288-7515
Attorney
Elected in 1966.
Chair of Ways & Means.

1991: 90% F, 93% C
1990: 100% F, 100% C
1989: 100% F, 96% C

24. Cortese, Dominic L. (D)

District Office:
(408) 269-6500
Farmer and businessman
Elected in 1980.
Chair of Water, Parks & Wildlife.
Member of Agriculture.
1991: 85% F
1990: 89% F
1989: 97% F

25. Areias, Rusty (D)

District Office:
(209) 826-6100
Dairy farmer and businessman
Elected in 1982.
Chair of Agriculture. Member of
Transportation.
1991: 74% F
1990: 100% F
1989: 92% F

26. Andal, Dean (R)

District Office:
(209) 948-7479
Businessman
Elected in 1991.

27. Cannella, Sal (D)

District Office:
(209) 576-6211
Full-time legislator
Elected in 1990.
1991: 70% F
1990: 93% F

28. Farr, Sam (D)

District Office:
(408) 425-1503
Full-time legislator
Elected in 1980.
Member of Natural Resources.
1991: 88% F, 100% C
1990: 95% F, 92% C
1989: 100% F, 100% C

29. Seastrand, Andrea (R)

District Office:
(805) 549-2281
Full-time legislator
*Elected in 1990, to replace her
deceased husband, Eric Seastrand.*
Member of Agriculture.
1991: 8% F

30. Costa, Jim (D)

District Office:
(209) 264-3078
Full-time legislator
Elected in 1978.
Member of Water, Parks &
Wildlife; Elections,
Reapportionment & Constitutional
Amendments; Transportation;
Ways & Means.
1991: 74% F, 61% C
1990: 89% F, 57% C
1989: 92% F, 80% C

31. Bronzan, Bruce (D)

District Office:
(209) 445-5532
Full-time legislator
Elected in 1982.

Chair of Health. Member of
Agriculture.

1991: 85% F
1990: 94% F
1989: 100% F

32. Jones, Bill (R)

District Office:
(209) 224-7833
Businessman and rancher
*Elected in 1982. Minority Floor
Leader.*
Member of Environmental Safety
& Toxic Materials; Water, Parks &
Wildlife; Agriculture.
1991: 0% F
1990: 6% F, 7% C
1989: 57% F, 48% C

33. Harvey, Trice (R)

District Office:
(805) 324-3300
Full-time legislator
Elected in 1986.
Member of Water, Parks &
Wildlife.
1991: 8% F
1990: 5% F, 8% C
1989: 29% F, 33% C

34. Wyman, Phillip (R)

District Office:
(805) 395-2673
Rancher and attorney
Elected in 1978.
Member of Water, Parks, &
Wildlife.
1991: 0% F
1990: 11% F
1989: 21% F

35. O'Connell, Jack (D)

District Office:
(805) 966-2296
Full-time legislator.
*Elected in 1982. Speaker Pro
Tempore.*
Member of Ways & Means.
1991: 92% F, 83% C
1990: 95% F, 100% C
1989: 100% F, 100% C

36. McClintock, Tom (R)

District Office:
(805) 987-9797
Full-time legislator
Elected in 1982.
Member of Environmental Safety
& Toxic Materials; Transportation.
1991: 4% F, 0% C
1990: 5% F
1989: 18% F

37. Wright, Cathie (R)

District Office:
(805) 522-2920
Full-time legislator
Elected in 1980.
Member of Environmental Safety
& Toxic Materials; Ways & Means
1991: 15% F, 11% C
1990: 10% F, 5% C
1989: 17% F, 26% C

38. Boland, Paula (R)

District Office:
(818) 368-3838
Realtor
Elected in 1990.

Member of Public Safety.
1991: 11% F

39. Katz, Richard (D)

District Office:
(818) 894-3671
Full-time legislator
Elected in 1980.
Chair of Transportation. Member
of Environmental Safety & Toxic
Materials; Water, Parks &
Wildlife; Elections,
Reapportionment & Constitutional
Amendments.
1991: 96% F, 73% C
1990: 100% F, 100% C
1989: 100% F, 100% C

40. Bane, Tom (D)

District Office:
(818) 986-8090
Full-time legislator
*Assemblymember 1958-64,
Re-elected in 1974.*
Member of Elections,
Reapportionment & Constitutional
Amendments.
1991: 91% F
1990: 95% F
1989: 96% F

41. Nolan, Patrick (R)

District Office:
(818) 240-6330
Attorney
Elected in 1978.
Member of Ways & Means;
Elections, Reapportionment &
Constitutional Amendments.
1991: 8% F, 14% C
1990: 15% F, 0% C
1989: 21% F, 48% C

42. Mountjoy, Richard (R)

District Office:
(818) 446-3134
Full-time legislator
Elected in 1978.
Member of Elections,
Reapportionment & Constitutional
Amendments.
1991: 8% F
1990: 26% F
1989: 17% F

43. Friedman, Terry (D)

District Office:
(818) 501-8991
Attorney
Elected in 1986.
Member of Natural Resources.
1991: 100% F, 100% C
1990: 100% F, 100% C
1989: 100% F, 100% C

44. Hayden, Tom (D)

District Office:
(310) 393-2717
Consumer advocate, educator &
author
Elected in 1982.
Member of Natural Resources.
1991: 100% F, 100% C
1990: 100% F
1989: 100% F, 100% C

45. Margolin, Burt (D)

District Office:
(213) 655-9750

Full-time legislator

Elected in 1982.
Member of Natural Resources;
Health; Elections,
Reapportionment & Constitutional
Amendments:
1991: 100% F, 100% C
1990: 100% F, 100% C
1989: 100% F, 100% C

46. Friedman, Barbara (D)

District Office:
(213) 386-8042
Full-time legislator
Elected in 1991
Member of Environmental Safety
& Toxics.
1991: 100% F

47. Hughes, Theresa (D)

District Office:
(213) 747-7451
Full-time legislator
Elected in 1975.
Member of Ways and Means;
Elections, Reapportionment &
Constitutional Amendments.
1991: 88% F, 82% C
1990: 95% F
1989: 100% F

48. Archie-Hudson, Marguerite (D)

District Office:
(213) 751-1087
Full-time legislator
Elected in 1990.
Member of Elections,
Reapportionment & Constitutional
Amendments.
1991: 96% F

49. Moore, Gwen (D)

District Office:
(213) 292-0605
Full-time legislator
Elected in 1978, Majority Whip.
Chair of Utilities and Commerce.
1991: 96% F
1990: 95% F
1989: 100% F

50. Tucker, Curtis Jr. (D)

District Office:
(310) 292-0605
Full-time legislator
Elected in 1988.
Member of Ways and Means;
Health.
1991: 81% F, 87% C
1990: 95% F
1989: 100% F

51. Felando, Gerald (R)

District Office:
(310) 540-2123
Dentist
Elected in 1978.
Member of Ways & Means; Health.
1991: 42% F, 50% C
1990: 35% F, 27% C
1989: 64% F, 62% C

52. Horcher, Paul (R)

District Office:
(310) 947-9878
Attorney
Elected in 1990.

Member of Utilities and
Commerce.
1991: 11% F

53. Floyd, Richard (D)

DistrictOffice:
(213)516-4037
Full-time legislator
Elected in 1980.
1991: 78% F
1990: 88% F
1989: 78% F

54. Murray, Willard (D)

DistrictOffice:
(310) 516-4144
Full-time legislator
Elected in 1988.
Member of Ways & Means.
1991: 73% F, 77% C
1990: 95% F
1989: 85% F, 80% C

55. Polanco, Richard (D)

DistrictOffice:
(213)255-7111
Full-time legislator
Elected in 1986.
Member of Ways & Means; Health
1991: 96% F, 89% C
1990: 94% F
1989: 96% F, 100% C

56. Roybal-Allard, Lucille (D)

DistrictOffice:
(213) 266-2772
Full-time legislator
Elected in 1987.
Member of Health; Utilities and
Commerce; Ways & Means.
1991: 100% F, 97% C
1990: 100% F, 100% C
1989: 100% F, 100% C

57. Elder, Dave (D)

DistrictOffice:
(310)548-7991
Budget analyst
Elected in 1978.
Member of Elections,
Reapportionment & Constitutional
Amendments.
1991: 92% F
1990: 95% F
1989: 92% F

58. Mays, Tom (R)

DistrictOffice:
(310)493-5514
Full-time legislator
Elected in 1990.
1991: 30% F

59. Becerra, Xavier (D)

DistrictOffice:
(213)721-2904
Attorney
Elected in 1990.
Member of Environmental Safety
& Toxic Materials.
1991: 100% F, 100% C

60. Tanner, Sally (D)

DistrictOffice:
(818) 442-9100
Full-time legislator
Elected in 1978.
Chair of Environmental Safety &
Toxic Materials Member of
Agriculture.

1991: 96% F, 100% C
1990: 94% F, 92% C
1989: 100% F, 95% C

61. Woodruff, Paul (R)

DistrictOffice:
(714) 798-0337
Full-time legislator
Elected in 1988.
Member of Transportation; Ways
and Means.
1991: 16% F, 22% C
1990: 24% F
1989: 21% F

62. Lancaster, William (R)

DistrictOffice:
(818)332-6271
Full-time legislator
Elected in 1972.
Member of Transportation.
1991: 5% F
1990: 37% F
1989: 37% F

63. Epple, Bob (D)

DistrictOffice:
(310) 861-5966
Attorney & tax consultant
Elected in 1988.
Member of Ways & Means.
1991: 87% F, 81% C
1990: 94% F
1989: 100% F

64. Johnson, Ross (R)

DistrictOffice:
(714) 738-5853
Full-time legislator
Elected in 1978.
1991: 5% F
1990: 0% F
1989: 13% F

65. Brulte, Jim (R)

DistrictOffice:
(714) 466-9096
Management Consultant
Elected in 1990.
Member of Natural Resources;
Environmental Safety.
1991: 12% F, 10% C

66. Eaves, Gerald (D)

DistrictOffice:
(714) 820-1902
Full-time legislator
Elected in 1984.
Member of Elections,
Reapportionment & Constitutional
Amendments; Transportation;
Ways & Means.
1991: 71% F, 67% C
1990: 89% F
1989: 89% F

67. Conroy, Mickey (R)

*Elected in 1991. Conroy was
elected in Sept. 1991 to replace
John Lewis who vacated this seat
in the same year to take office in
the state Senate.*

68. Clute, Steve (D)

DistrictOffice:
(714) 782-3222
Full-time legislator
Elected in 1982.
Member of Transportation;
Agriculture; Ways & Means.

1991: 62% F, 57% C
1990: 60% F, 73% C
1989: 100% F

69. Frizzelle, Nolan (R)

District Office:
(714)662-5503
Optometrist
Elected-in 1980.
Member of Natural Resources;
Ways & Means.
1991: 19% F, 17% C
1990: 17% F, 0% C
1989: 14% F, 30% C

70. Ferguson, Gil (R)

DistrictOffice:
(714)756-0665
Full-time legislator
Elected in 1984.
1991: 5% F
1990: 17% F
1989: 11% F, 29% C

71. Allen, Doris (R)

DistrictOffice:
(714) 821-1500
Businessswoman
Elected in 1982.
Member of Natural Resources;
Health.
1991: 9% F, 35% C
1990: 35% F
1989: 38% F, 0% C

72. Umberg, Tom (D)

DistrictOffice:
(714)537-4477
Attorney
Elected in 1990.
Member of Environmental Safety
& Toxic Materials; Transportation;
Public Safety.
1991: 91% F, 100% C

73. Kelley, David G. (R)

DistrictOffice:
(714) 369-6644
Citrus rancher
Elected in 1978.
Member of Agriculture; Water,
Parks & Wildlife.
1991: 7% F
1990: 26% F, 0% C
1989: 24% F, 20% C

74. Frazee, Robert (R)

DistrictOffice:
(619) 434-1749.
Businessman
Elected in 1978.
Member of Transportation.
1991: 15% F
1990: 22% F, 7% C
1989: 36% F, 63% C

75. Alpert, Deidre (D)

DistrictOffice:
(619)457-5775
Full-time legislator
Elected in 1990.
Member of Transportation; Health.
1991: 100% F, 100% C

76. Hunter, Tricia (R)

DistrictOffice:
(619) 489-8924
Nurse
Elected in 1989.
Member of Health.

1991: 48% F
1990: 28% F

77. Bentley, Carol (R)

DistrictOffice:
(619) 464-7204
Full-time legislator
Elected in 1988.
Member of Natural Resources;
Elections, Reapportionment &
Constitutional Amendments;
Public Safety.
1991: 8% F, 12% C
1990: 13% F
1989: 26% F

78. Gotch, Mike (D)

DistrictOffice:
(619) 232-2046
Full-time legislator
Elected in 1990.
Member of Natural Resources;
Environmental Safety & Toxic
Materials.
1991: 100% F, 100% C

79. Chacon, Peter (D)

DistrictOffice:
(619) 232-2405
Educator
Elected in 1970.
Chair of Elections,
Reapportionment & Constitutional
Amendments.
1991: 96% F
1990: 93% F
1989: 92% F

80. Peace, Steve (D)

DistrictOffice:
(619)352-3101
Businessman
Elected in 1982.
Member of Utilities & Commerce;
Water, Parks & Wildlife.
1991: 79% F
1990: 95% F, 88% C
1989: 81% F

Senate Roster

Below is a district-order listing of State Senate Members during the 1991 Legislative session. The description for each Senate Member includes their occupation; a listing of their environmental committee assignment(s), and a brief history of their environmental scores on the floor (F) and in committee (C). State Senators are up for re-election every 4 years. To contact your Senator about his or her environmental voting record please call the district phone number listed below or write to:

Senator _____
California State Senate
State Capitol
Sacramento, CA 95814

1. Leslie, Tim (R)

District Office:
(916)969-8232
Full-time legislator
Elected in 1991.
Member of Natural Resources & Wildlife; Judiciary; Housing & Urban Affairs; Toxics & Public Safety.
1991: 19% F, 20% C

2. Keene, Barry (D)

District Office:
(707) 648-4080
Attorney
Elected in 1978, Majority Floor Leader.
Member of Judiciary.
1991: 85% F, 100% C
1990: No F score, 80% C
1989: 100% F

3. Marks, Milton (D)

District Office:
(415)479-6612
Attorney
Elected in 1967.
Chair of Elections & Reapportionment. Member of Housing & Urban Affairs; Judiciary; Natural Resources & Wildlife.
1991: 95% F, 100% C
1990: 88% F, 83% C
1989: 100% F, 94% C

4. Thompson, Michael (D)

District Office:
(707)224- 1990
Full-time legislator.
Elected in 1990.
Member of Agriculture & Water Resources; Health & Human Services; Local Government.
1991: 74% F, 83% C

5. Johnston, Patrick (D)

District Office:
(209) 948-7930
Full-time legislator.
Elected in 1991.
Member of Natural Resources.
1991: 78% F, 100% C

6. Greene, Leroy (D)

District Office:
(916)481-6540
Civil engineer
Elected in 1982.
Chair of Housing & Urban Affairs.
Member of Appropriations; Industrial Relations.
1991: 74% F, 80% C
1990: 83% F, 80%

1989: 95% F

7. Boatwright, Daniel (D)

District Office:
(510)689-1973
Attorney
Elected in 1980.
Member of Transportation; Elections & Reapportionment.
1991: 77% F
1990: 85% F
1989: 94% F, 90% C

8. Kopp, Quentin (I)

District Office:
(415) 952-5666
Attorney
Elected in 1986.
Chair of Transportation. Member of Housing & Urban Affairs; Local Government; Toxics & Public Safety.
1991: 71% F, 90% C
1990: 76% F, 87% C
1989: 95% F, 100% C

9. Petris, Nicholas C. (D)

District Office:
(510)464-1333
Attorney
Elected in 1967.
Member of Judiciary; Industrial Relations.
1991: 91% F
1990: 88% F
1989: 100% F

10. Lockyer, Bill (D)

District Office:
(510) 582-8800
Full-time legislator
Elected in 1982.
Chair of Judiciary. Member of Appropriations; Toxics & Public Safety; Industrial Relations; Governmental Organization.
1991: 86% F, 87% C
1990: 88% F, 87% C
1989: 95% F, 100% C

11. Morgan, Rebecca (R)

District Office:
(415) 688-6330
Full-time legislator
Elected in 1984.
Member of Transportation; Energy & Public Utilities.
1991: no score
1990: 27% F
1989: 75% F

12. McCorquodale, Dan (D)

District Office:
(209)576-6231

Full-time legislator

Elected in 1982.
Chair of Natural Resources & Wildlife. Vice Chair of Transportation. Member of Agriculture & Water Resources.
1991: 85% F, 79% C
1990: 100% F, 75% C
1989: 90% F, 90% C

13. Alquist, Alfred (D)

District Office:
(408)286-8318
Full-time legislator
Elected in 1966.
Vice Chair of Constitutional Amendments. Member of Appropriations; Energy & Public Utilities; Governmental Organization.
1991: 84% F, 79% C
1990: 87% F, 78% C
1989: 93% F, 100% C

14. Maddy, Ken (R)

District Office:
(209)445-5567
Attorney
Elected in 1979, Minority Floor Leader.
Vice Chair of Health & Human Services and Governmental Organization. Member of Constitutional Amendments.
1991: 17% F, 43% C
1990: 35%
1989: 71% F

15. Vuich, Rose Ann (D)

District Office:
(209)591-5005
Farmer/ accountant
Elected in 1976.
Member of Agriculture & Water Resources; Transportation.
1991: 55% F, 80% C
1990: 57%F
1989: 80% F

16. Rogers, Don (R)

District Office:
(805)395-2927
Oil geologist
Elected in 1986.
Member of Agriculture & Water Resources; Natural Resources & Wildlife.
1991: 5% F, 0% C
1990: 12% F, 0% C
1989: 27% F, 35% C

17. Mello, Henry (D)

District Office:
(408)425-0401
Farmer/Businessman

Elected in 1980, Majority Whip.
Vice Chair of Agriculture & Water Resources. Member of Natural Resources & Wildlife; Health & Human Services; Governmental Organization; Energy & Public Utilities.
1991: 80% F, 73% C
1990: 87% F
1989: 83% F, 93% C

18. Hart, Gary (D)

District Office:
(805) 966-1766
Educator
Elected in 1982.
Vice Chair of Natural Resources & Wildlife. Member of Constitutional Amendments; Energy & Public Utilities.
1991: 95% F, 100% C
1990: 94% F, 83% C
1989: 100% F, 100% C

19. Davis, Ed (R)

District Office:
(818)368-1171
Full-time legislator
Elected in 1980.
Vice Chair of Judiciary. Member of Appropriations; Natural Resources & Wildlife.
1991: 75% F, 83% C
1990: 69% F, 75% C
1989: 95% F

20. Robbins, Alan (D)

This seat has been vacant since Robbins stepped down in 1991. Due to reapportionment it will not be filled until November 1992.
Attorney
Elected in 1973.
Member of Transportation.
1991: no score
1990: 92% F
1989: no score

21. Russell, Newton R. (R)

District Office:
(818)247-7021
Full-time legislator
Elected in 1974, Minority Whip.
Vice Chair of Energy & Public Utilities. Member of Local Government; Transportation.
1991: 33% F
1990: 18% F
1989: 60% F

22. Rosenthal, Herschel (D)

District Office:
(310)479-5588
Businessman
Elected in 1982.

Chair of Energy and Public Utilities. Member of Toxics & Public Safety; Elections & Reapportionment; Governmental Organization; Health & Human Services; Industrial Relations.
1991: 91% F, 94% C
1990: 100% F
1989: 100% F, 100% C

23. Roberti, David (D)

District Office:
(213) 876-5200
Attorney
Elected in 1971. President Pro Tempore.
Member of Judiciary; Agriculture & Water Resources; Elections & Reapportionment.
1991: 91% F, 71% C
1990: 94% F
1989: 95% F

24. Torres, Art (D)

District Office:
(213) 620-2529
Full-time legislator
Elected in 1982.
Chair of Toxics & Public Safety Management. Member of Appropriations; Governmental Organization; Judiciary.
1991: 90% F, 95% C
1990: 100% F, 100% C
1989: 94% F, 100% C

25. Leonard, Bill (R)

District Office:
(714) 946-4889
Realtor
Assembly Member 1978-88, Elected to the Senate in 1988.
Vice Chair of Housing & Urban Affairs and Toxics & Public Safety. Member of Appropriations; Industrial Relations.
1991: 23% F, 26% C
1990: 24% F, 38% C
1989: 44% F, 47% C

26. Calderon, Chuck (D)

District Office:
(818) 450-6185
Full-time legislator
Assembly Member 1982-89, Elected to Senate in 1990.
Member of Health & Human Services; Local Government.
1991: 87% F
1990: 71% F
1989: 96% F, 95% C

27. Greene, Bill (D)

District Office:
(213) 620-5600
Full-time legislator
Elected in 1975.
Chair of Industrial Relations. Member of Governmental Organization.
1991: no score
1990: 82% F
1989: no score

28. Watson, Diane (D)

District Office:
(213) 295-6655
Educator/school psychologist
Elected in 1978.

Chair of Health & Human Services. Member of Judiciary; Toxics & Public Safety.
1991: 89% F, 100% C
1990: 93% F
1989: 100% F

29. Beverly, Robert G. (R)

District Office:
(310) 540-1611
Attorney
Elected in 1976.
Vice Chair of Appropriations.
1991: 50% F, 60% C
1990: 56% F, 58% C
1989: 67% F, 75% C

30. Dills, Ralph C. (D)

District Office:
(310) 324-4949
Full-time legislator
Elected in 1966.
Chair of Governmental Organization. Member of Appropriations.
1991: 73% F, 80% C
1990: 56% F, 50% C
1989: 80% F, 92% C

31. Hill, Frank (R)

District Office:
(310) 947-3021
Full-time legislator
Assembly Member 1982-89, Elected to Senate in 1990.
Member of Local Government; Governmental Organization.
1991: 25% F, 60% C
1990: 50% F
1989: 55% F, 63% C

32. Royce, Edward (R)

District Office:
(714) 871-0270
Tax manager
Elected in 1982.
Chair of Constitutional Amendments. Member of Health & Human Services; Judiciary.
1991: 10% F, 63% C
1990: 13% F, 17% C
1989: 43% F

33. Green, Cecil (D)

District Office:
(310) 924-2116
Full-time legislator
Elected in 1986.
Member of Agriculture & Water Resources; Local Government; Transportation.
1991: 55% F, 57% C
1990: 67% F, 60% C
1989: 82% F, 86% C

34. Ayala, Ruben (D)

District Office:
(714) 884-3165
Insurance Broker
Elected in 1974.
Chair of Agriculture & Water Resources. Vice Chair of Local Government. Member of Appropriations; Transportation.
1991: no score
1990: 80% F, 60% C
1989: 90% F, 83% C

35. Lewis, John (R)

District Office:
(714) 939-0604
Full-time legislator
Assembly Member 1980-1990. Elected to Senate in 1991.
Member of Agriculture & Water Resources.
1991: 14% F

36. Presley, Robert

District Office:
(714) 782-4111
Full-time legislator
Elected in 1974.
Chair of Appropriations. Member of Agriculture & Water Resources; Judiciary.
1991: 80% F, 90% C
1990: 71% F, 62% C
1989: 90% F, 87% C

37. Bergeson, Marian (R)

District Office:
(714) 640-1137
Full-time legislator
Elected in 1984.
Chair of Local Government. Member of Agriculture & Water Resources; Appropriations; Natural Resources & Wildlife; Elections & Reapportionment; Transportation.
1991: 50% F, 64% C
1990: 54% F, 50% C
1989: 63% F, 88% C

38. Craven, William (R)

District Office:
(619) 438-3814
Full-time legislator
Elected in 1978.
Member of Agriculture & Water Resources; Local Government.
1991: no F score, 40% C
1990: no score
1989: no score

39. Killea, Lucy (I)

District Office:
(619) 696-6955
Full-time legislator
Assembly Member 1982-88, Elected to Senate in 1989.
Member of Housing & Urban Affairs; Transportation; Energy & Public Utilities.
1991: 92% F, 93% C
1990: 100% F
1989: 100% F, 100% C

40. Deddeh, Wadie P. (D)

District Office:
(619) 427-7080
Full-time legislator
Elected in 1982.
Member of Health & Human Services.
1991: 72% F
1990: 70% F, 80% C
1989: 100% F